

Anti-FYN antibody (488-537 aa) (STJ93171)

STJ93171

GENERAL INFORMATION

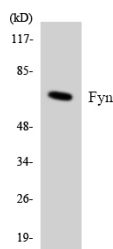
Product Type	Primary antibodies
Short Description	Rabbit polyclonal antibody anti-Tyrosine-protein kinase Fyn (488-537 aa) is suitable for use in Western Blot, Immunohistochemistry, Immunofluorescence and ELISA research applications.
Applications	WB/IHC/IF/ELISA
Host/Source	Rabbit
Reactivity	Human/Mouse/Rat

PRODUCT PROPERTIES

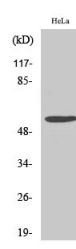
Clonality	Polyclonal
Clone ID	
Concentration	1 mg/mL
Conjugation	Unconjugated
Purification	The antibody was affinity-purified from rabbit antiserum by affinity-chromatography using epitope-specific immunogen.
Dilution Range	WB 1:500-1:2000 ELISA 1:5000 IF 1:50-200
Formulation	Liquid in PBS containing 50% Glycerol, 0.5% BSA and 0.02% Sodium Azide.
Isotype	IgG
Storage Instruction	Store at -20°C for up to 1 year from the date of receipt, and avoid repeat freeze-thaw cycles.

TARGET INFORMATION

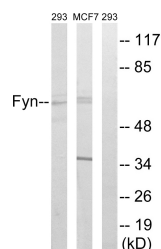
Gene ID	2534
Gene Symbol	FYN
Uniprot ID	FYN_HUMAN
Immunogen	The antiserum was produced against synthesized peptide derived from the human Fyn at the amino acid range 488-537
Immunogen Region	488-537 aa
Specificity	Fyn Polyclonal Antibody detects endogenous levels of Fyn protein.
Immunogen Sequence	



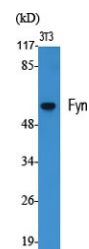
Western blot analysis of the lysates from K562 cells using Fyn antibody.



Western blot analysis of COLO205 cells using Fyn Polyclonal Antibody diluted at 1/4 2000



Western blot analysis of lysates from MCF-7 and 293 cells, using Fyn Antibody. The lane on the right is blocked with the synthesized peptide.



Western blot analysis of various cells using Fyn Polyclonal Antibody diluted at 1/4 2000