

Anti-FCSK antibody (11-60 aa) (STJ93163)

STJ93163

GENERAL INFORMATION

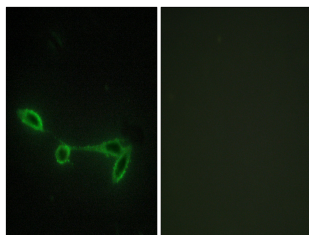
Product Type	Primary antibodies
Short Description	Rabbit polyclonal antibody anti-L-fucose kinase (11-60 aa) is suitable for use in Western Blot, Immunofluorescence and ELISA research applications.
Applications	WB/IF/ELISA
Host/Source	Rabbit
Reactivity	Human/Mouse/Monkey

PRODUCT PROPERTIES

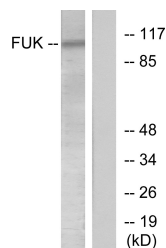
Clonality	Polyclonal
Clone ID	
Concentration	1 mg/mL
Conjugation	Unconjugated
Purification	The antibody was affinity-purified from rabbit antiserum by affinity-chromatography using epitope-specific immunogen.
Dilution Range	WB 1:500-1:2000 IF 1:200-1:1000 ELISA 1:20000
Formulation	Liquid in PBS containing 50% Glycerol, 0.5% BSA and 0.02% Sodium Azide.
Isotype	IgG
Storage Instruction	Store at -20°C for up to 1 year from the date of receipt, and avoid repeat freeze-thaw cycles.

TARGET INFORMATION

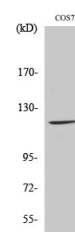
Gene ID	197258
Gene Symbol	FCSK
Uniprot ID	FCSK_HUMAN
Immunogen	The antiserum was produced against synthesized peptide derived from the human FUK at the amino acid range 11-60
Immunogen Region	11-60 aa
Specificity	Fucokinase Polyclonal Antibody detects endogenous levels of Fucokinase protein.
Immunogen Sequence	



Immunofluorescence analysis of NIH/3T3 cells, using FUK Antibody. The picture on the right is blocked with the synthesized peptide.



Western blot analysis of lysates from COS7 cells, treated with insulin 0.01U/ml 45', using FUK Antibody. The lane on the right is blocked with the synthesized peptide.



Western blot analysis of various cells using Fucokinase Polyclonal Antibody