

## Anti-FZD6 antibody (116-165 aa) (STJ93150)

STJ93150

### GENERAL INFORMATION

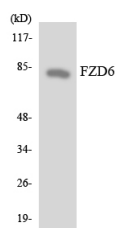
|                          |  |
|--------------------------|--|
| <b>Product Type</b>      | Primary antibodies   |
| <b>Short Description</b> | Rabbit polyclonal antibody anti-Frizzled-6 (116-165 aa) is suitable for use in Western Blot, Immunohistochemistry, Immunofluorescence and ELISA research applications. |
| <b>Applications</b>      | WB/IHC/IF/ELISA  |
| <b>Host/Source</b>       | Rabbit   |
| <b>Reactivity</b>        | Human/Rat/Mouse  |

### PRODUCT PROPERTIES

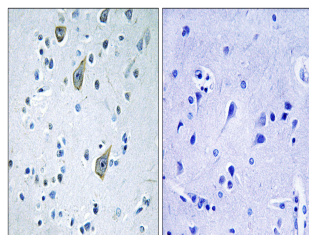
|                            |   |
|----------------------------|---|
| <b>Clonality</b>           | Polyclonal  |
| <b>Clone ID</b>            |   |
| <b>Concentration</b>       | 1 mg/mL   |
| <b>Conjugation</b>         | Unconjugated  |
| <b>Purification</b>        | The antibody was affinity-purified from rabbit antiserum by affinity-chromatography using epitope-specific immunogen. |
| <b>Dilution Range</b>      | WB 1:500-1:2000<br>IHC 1:100-1:300<br>IF 1:200-1:1000<br>ELISA 1:5000   |
| <b>Formulation</b>         | Liquid in PBS containing 50% Glycerol, 0.5% BSA and 0.02% Sodium Azide.   |
| <b>Isotype</b>             | IgG   |
| <b>Storage Instruction</b> | Store at -20°C for up to 1 year from the date of receipt, and avoid repeat freeze-thaw cycles.                        |

### TARGET INFORMATION

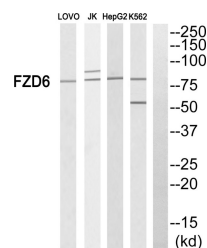
|                           |  |
|---------------------------|--|
| <b>Gene ID</b>            | 8323   |
| <b>Gene Symbol</b>        | FZD6   |
| <b>Uniprot ID</b>         | FZD6_HUMAN   |
| <b>Immunogen</b>          | The antiserum was produced against synthesized peptide derived from the human FZD6 at the amino acid range 116-165 |
| <b>Immunogen Region</b>   | 116-165 aa   |
| <b>Specificity</b>        | Frizzled-6 Polyclonal Antibody detects endogenous levels of Frizzled-6 protein.                                    |
| <b>Immunogen Sequence</b> |  |



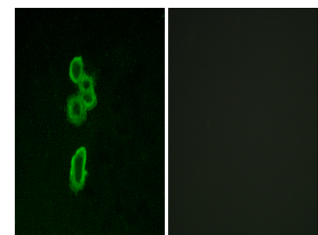
Western blot analysis of the lysates from 293 cells using FZD6 antibody.



Immunohistochemistry analysis of paraffin-embedded human brain tissue, using FZD6 Antibody. The picture on the right is blocked with the synthesized peptide.



Western blot analysis of FZD6 Antibody. The lane on the right is blocked with the FZD6 peptide.



Immunofluorescence analysis of MCF7 cells, using FZD6 Antibody. The picture on the right is blocked with the synthesized peptide.

This product is suitable for in-vitro studies under the RESEARCH USE ONLY [RUO] licence. This product must not be used as for diagnostic or other medical purposes.  
St John's Laboratory Ltd, Knowledge Dock Business Centre, University Way, London, E16 2RD | Tel: 0208 223 3081