

## Anti-FOXO3 antibody (220-269 aa) (STJ93128)

STJ93128

### GENERAL INFORMATION

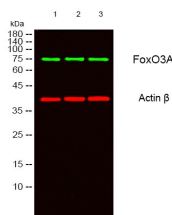
<b>Product Type</b>	Primary antibodies
<b>Short Description</b>	Rabbit polyclonal antibody anti-Forkhead box protein O3 (220-269 aa) is suitable for use in Western Blot, Immunohistochemistry, Immunofluorescence and ELISA research applications.
<b>Applications</b>	WB/IHC/IF/ELISA
<b>Host/Source</b>	Rabbit
<b>Reactivity</b>	Human/Mouse/Rat

### PRODUCT PROPERTIES

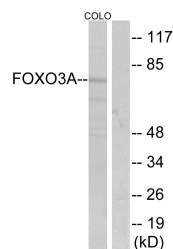
<b>Clonality</b>	Polyclonal
<b>Clone ID</b>	
<b>Concentration</b>	1 mg/mL
<b>Conjugation</b>	Unconjugated
<b>Purification</b>	The antibody was affinity-purified from rabbit antiserum by affinity-chromatography using epitope-specific immunogen.
<b>Dilution Range</b>	WB 1:500-1:2000 IHC 1:100-1:300 IF 1:200-1:1000 ELISA 1:20000
<b>Formulation</b>	Liquid in PBS containing 50% Glycerol, 0.5% BSA and 0.02% Sodium Azide.
<b>Isotype</b>	IgG
<b>Storage Instruction</b>	Store at -20°C for up to 1 year from the date of receipt, and avoid repeat freeze-thaw cycles.

### TARGET INFORMATION

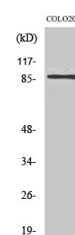
<b>Gene ID</b>	2309
<b>Gene Symbol</b>	FOXO3
<b>Uniprot ID</b>	FOXO3_HUMAN
<b>Immunogen</b>	The antiserum was produced against synthesized peptide derived from the human FKHL1 at the amino acid range 220-269
<b>Immunogen</b>	220-269 aa
<b>Region</b>	
<b>Specificity</b>	FoxO3A Polyclonal Antibody detects endogenous levels of FoxO3A protein.
<b>Immunogen Sequence</b>	



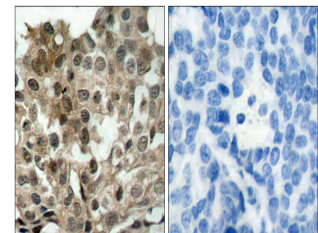
Western blot analysis of lysates from 1) MCF-7, 2) COLO205, 3) HELA cells, (Green) primary antibody was diluted at 1:1000, 4A°C over night, secondary antibody (cat: NA) was diluted at 1:10000, 37A°C 1hour. (Red) Actin Beta monoclonal antibody (5B7) (cat: STJ96930) antibody was diluted at 1:5000 as loading control, 4A°C over night, secondary antibody (cat: NA) was diluted at 1:10000, 37A°C 1hour.



Western blot analysis of lysates from COLO205 cells, treated with serum, using FKHL1 Antibody. The lane on the right is blocked with the synthesized peptide.



Western blot analysis of Jurkat cells using FoxO3A Polyclonal Antibody diluted at 1/4 1000



Immunohistochemistry analysis of paraffin-embedded human breast carcinoma tissue, using FKHL1 Antibody. The picture on the right is blocked with the synthesized peptide.