

Anti-FOXO1 antibody (295-344 aa) (STJ93126)

STJ93126

GENERAL INFORMATION

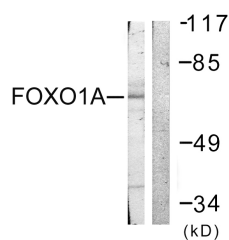
Product Type	Primary antibodies
Short Description	Rabbit polyclonal antibody anti-Forkhead box protein O1 (295-344 aa) is suitable for use in Western Blot, Immunohistochemistry, Immunofluorescence and ELISA research applications.
Applications	WB/IHC/IF/ELISA
Host/Source	Rabbit
Reactivity	Human/Mouse/Rat

PRODUCT PROPERTIES

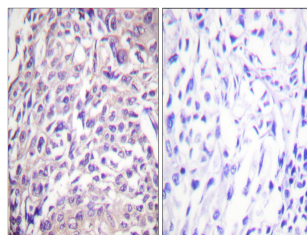
Clonality	Polyclonal
Clone ID	
Concentration	1 mg/mL
Conjugation	Unconjugated
Purification	The antibody was affinity-purified from rabbit antiserum by affinity-chromatography using epitope-specific immunogen.
Dilution Range	WB 1:500-1:2000 IHC 1:100-1:300 IF 1:200-1:1000 ELISA 1:10000
Formulation	Liquid in PBS containing 50% Glycerol, 0.5% BSA and 0.02% Sodium Azide.
Isotype	IgG
Storage Instruction	Store at -20°C for up to 1 year from the date of receipt, and avoid repeat freeze-thaw cycles.

TARGET INFORMATION

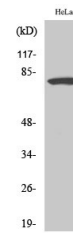
Gene ID	2308
Gene Symbol	FOXO1
Uniprot ID	FOXO1_HUMAN
Immunogen	The antiserum was produced against synthesized peptide derived from the human FOXO1A at the amino acid range 295-344
Immunogen Sequence	295-344 aa
Region	
Specificity	FoxO1A Polyclonal Antibody detects endogenous levels of FoxO1A protein.



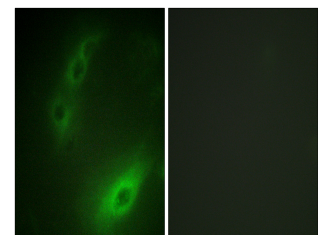
Western blot analysis of lysates from HeLa cells, treated with Serum 20% 15', using FOXO1A Antibody. The lane on the right is blocked with the synthesized peptide.



Immunohistochemistry analysis of paraffin-embedded human breast carcinoma tissue, using FOXO1A Antibody. The picture on the right is blocked with the synthesized peptide.



Western blot analysis of HeLa cells using FoxO1A Polyclonal Antibody diluted at 1/4 1000



Immunofluorescence analysis of HUVEC cells, using FOXO1A Antibody. The picture on the right is blocked with the synthesized peptide.