

Anti-FOXD3 antibody (211-260 aa) (STJ93108)

STJ93108

GENERAL INFORMATION

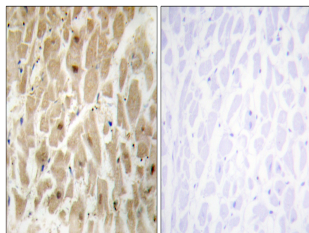
Product Type	Primary antibodies
Short Description	Rabbit polyclonal antibody anti-Forkhead box protein D3 (211-260 aa) is suitable for use in Western Blot, Immunohistochemistry, Immunofluorescence and ELISA research applications.
Applications	WB/IHC/IF/ELISA
Host/Source	Rabbit
Reactivity	Human/Mouse

PRODUCT PROPERTIES

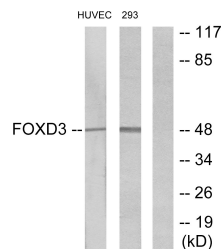
Clonality	Polyclonal
Clone ID	
Concentration	1 mg/mL
Conjugation	Unconjugated
Purification	The antibody was affinity-purified from rabbit antiserum by affinity-chromatography using epitope-specific immunogen.
Dilution Range	WB 1:500-1:2000 IHC 1:100-1:300 ELISA 1:5000 IF 1:50-200
Formulation	Liquid in PBS containing 50% Glycerol, 0.5% BSA and 0.02% Sodium Azide.
Isotype	IgG
Storage Instruction	Store at -20°C for up to 1 year from the date of receipt, and avoid repeat freeze-thaw cycles.

TARGET INFORMATION

Gene ID	27022
Gene Symbol	FOXD3
Uniprot ID	FOXD3_HUMAN
Immunogen	The antiserum was produced against synthesized peptide derived from the human FOXD3 at the amino acid range 211-260
Immunogen	211-260 aa
Region	
Specificity	FoxD3 Polyclonal Antibody detects endogenous levels of FoxD3 protein.
Immunogen Sequence	



Immunohistochemistry analysis of paraffin-embedded human heart tissue, using FOXD3 Antibody. The picture on the right is blocked with the synthesized peptide.



Western blot analysis of lysates from HUVEC and 293 cells, using FOXD3 Antibody. The lane on the right is blocked with the synthesized peptide.



Western blot analysis of various cells using FoxD3 Polyclonal Antibody cells nucleus extracted by Minute™ Cytoplasmic and Nuclear Fractionation kit (SC-003, InventorTech, MN, USA).