

Anti-KDR antibody (917-966 aa) (STJ93088)

STJ93088

GENERAL INFORMATION

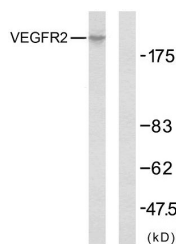
Product Type	Primary antibodies
Short Description	Rabbit polyclonal antibody anti-Vascular endothelial growth factor receptor 2 (917-966 aa) is suitable for use in Western Blot, Immunohistochemistry, Immunofluorescence and ELISA research applications.
Applications	WB/IHC/IF/ELISA
Host/Source	Rabbit
Reactivity	Human/Mouse/Fish

PRODUCT PROPERTIES

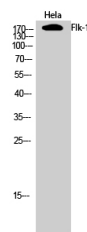
Clonality	Polyclonal
Clone ID	
Concentration	1 mg/mL
Conjugation	Unconjugated
Purification	The antibody was affinity-purified from rabbit antiserum by affinity-chromatography using epitope-specific immunogen.
Dilution Range	WB 1:500-1:2000 IHC 1:100-1:300 IF 1:200-1:1000 ELISA 1:20000
Formulation	Liquid in PBS containing 50% Glycerol, 0.5% BSA and 0.02% Sodium Azide.
Isotype	IgG
Storage Instruction	Store at -20°C for up to 1 year from the date of receipt, and avoid repeat freeze-thaw cycles.

TARGET INFORMATION

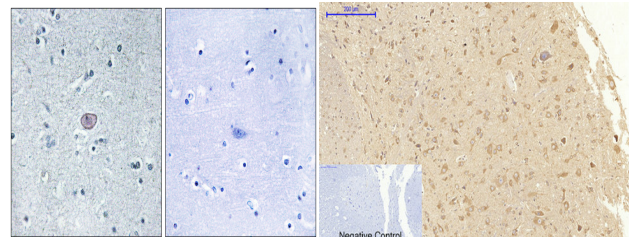
Gene ID	3791
Gene Symbol	KDR
Uniprot ID	VGFR2_HUMAN
Immunogen	The antiserum was produced against synthesized peptide derived from the human VEGFR2 at the amino acid range 917-966
Immunogen Region	917-966 aa
Specificity	Flk-1 Polyclonal Antibody detects endogenous levels of Flk-1 protein.
Immunogen Sequence	



Western blot analysis of lysates from SK-OV3 cells, using VEGFR2 Antibody. The lane on the right is blocked with the synthesized peptide.



Western blot analysis of HeLa cells using Flk-1 Polyclonal Antibody diluted at 1/1000



Immunohistochemistry analysis of paraffin-embedded human brain tissue, using VEGFR2 Antibody. The picture on the right is blocked with the synthesized peptide.

Immunohistochemical analysis of paraffin-embedded Rat-spinal-cord tissue. 1. Flk-1 Polyclonal Antibody was diluted at 1:200 (4A°C, overnight). 2. Sodium citrate pH 6.0 was used for antibody retrieval (>98A°C, 20min). 3. Secondary antibody was diluted at 1:200 (room temperature, 30min). Negative control was used by secondary antibody only.

This product is suitable for in-vitro studies under the RESEARCH USE ONLY [RUO] licence. This product must not be used as for diagnostic or other medical purposes.
St John's Laboratory Ltd, Knowledge Dock Business Centre, University Way, London, E16 2RD | Tel: 0208 223 3081