

Anti-FKBPL antibody (251-300 aa) (STJ93079)

STJ93079

GENERAL INFORMATION

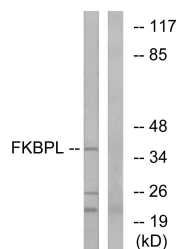
Product Type	Primary antibodies
Short Description	Rabbit polyclonal antibody anti-FK506-binding protein-like (251-300 aa) is suitable for use in Western Blot, Immunohistochemistry, Immunofluorescence and ELISA research applications.
Applications	WB/IHC/IF/ELISA
Host/Source	Rabbit
Reactivity	Human/Mouse/Rat

PRODUCT PROPERTIES

Clonality	Polyclonal
Clone ID	
Concentration	1 mg/mL
Conjugation	Unconjugated
Purification	The antibody was affinity-purified from rabbit antiserum by affinity-chromatography using epitope-specific immunogen.
Dilution Range	WB 1:500-1:2000 IHC 1:100-1:300 ELISA 1:20000 IF 1:50-200
Formulation	Liquid in PBS containing 50% Glycerol, 0.5% BSA and 0.02% Sodium Azide.
Isotype	IgG
Storage Instruction	Store at -20°C for up to 1 year from the date of receipt, and avoid repeat freeze-thaw cycles.

TARGET INFORMATION

Gene ID	63943
Gene Symbol	FKBPL
Uniprot ID	FKBPL_HUMAN
Immunogen	The antiserum was produced against synthesized peptide derived from the human FKBPL at the amino acid range 251-300
Immunogen Region	251-300 aa
Specificity	FKBPL Polyclonal Antibody detects endogenous levels of FKBPL protein.
Immunogen Sequence	



Western blot analysis of lysates from Jurkat cells, using FKBPL Antibody. The lane on the right is blocked with the synthesized peptide.