

Anti-FBLN2 antibody (241-290 aa) (STJ93072)

STJ93072

GENERAL INFORMATION

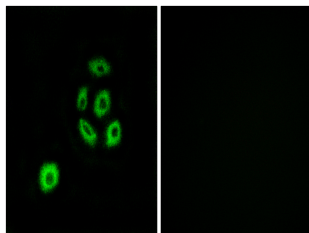
Product Type	Primary antibodies
Short Description	Rabbit polyclonal antibody anti-Fibulin-2 (241-290 aa) is suitable for use in Western Blot, Immunohistochemistry, Immunofluorescence and ELISA research applications.
Applications	WB/IHC/IF/ELISA
Host/Source	Rabbit
Reactivity	Human/Rat/Mouse

PRODUCT PROPERTIES

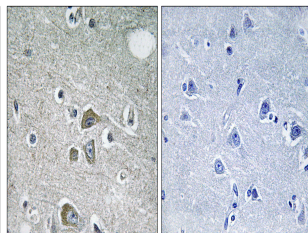
Clonality	Polyclonal
Clone ID	
Concentration	1 mg/mL
Conjugation	Unconjugated
Purification	The antibody was affinity-purified from rabbit antiserum by affinity-chromatography using epitope-specific immunogen.
Dilution Range	WB 1:500-1:2000 IHC 1:100-1:300 IF 1:200-1:1000 ELISA 1:40000
Formulation	Liquid in PBS containing 50% Glycerol, 0.5% BSA and 0.02% Sodium Azide.
Isotype	IgG
Storage Instruction	Store at -20°C for up to 1 year from the date of receipt, and avoid repeat freeze-thaw cycles.

TARGET INFORMATION

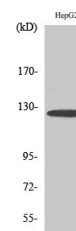
Gene ID	2199
Gene Symbol	FBLN2
Uniprot ID	FBLN2_HUMAN
Immunogen	The antiserum was produced against synthesized peptide derived from the human FBLN2 at the amino acid range 241-290
Immunogen Region	241-290 aa
Specificity	Fibulin-2 Polyclonal Antibody detects endogenous levels of Fibulin-2 protein.
Immunogen Sequence	



Immunofluorescence analysis of A549 cells, using FBLN2 Antibody. The picture on the right is blocked with the synthesized peptide.



Immunohistochemistry analysis of paraffin-embedded human brain tissue, using FBLN2 Antibody. The picture on the right is blocked with the synthesized peptide.



Western blot analysis of various cells using Fibulin-2 Polyclonal Antibody diluted at 1/4 500