

Anti-APBB2 antibody (471-520 aa) (STJ93053)

STJ93053

GENERAL INFORMATION

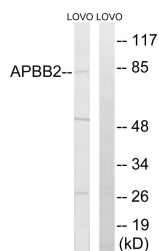
Product Type	Primary antibodies
Short Description	Rabbit polyclonal antibody anti-Amyloid beta precursor protein binding family B member 2 precursor protein-binding family B member 2 (471-520 aa) is suitable for use in Western Blot, Immunohistochemistry, Immunofluorescence and ELISA research applica
Applications	WB/IHC/IF/ELISA
Host/Source	Rabbit
Reactivity	Human/Mouse

PRODUCT PROPERTIES

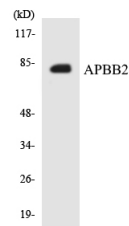
Clonality	Polyclonal
Clone ID	
Concentration	1 mg/mL
Conjugation	Unconjugated
Purification	The antibody was affinity-purified from rabbit antiserum by affinity-chromatography using epitope-specific immunogen.
Dilution Range	WB 1:500-1:2000 IHC 1:100-1:300 ELISA 1:40000 IF 1:50-200
Formulation	Liquid in PBS containing 50% Glycerol, 0.5% BSA and 0.02% Sodium Azide.
Isotype	IgG
Storage Instruction	Store at -20°C for up to 1 year from the date of receipt, and avoid repeat freeze-thaw cycles.

TARGET INFORMATION

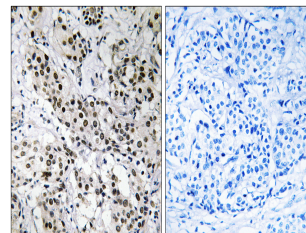
Gene ID	323
Gene Symbol	APBB2
Uniprot ID	APBB2_HUMAN
Immunogen	The antiserum was produced against synthesized peptide derived from the human APBB2 at the amino acid range 471-520
Immunogen Region	471-520 aa
Specificity	Fe65L Polyclonal Antibody detects endogenous levels of Fe65L protein.
Immunogen Sequence	



Western blot analysis of lysates from LOVO cells, using APBB2 Antibody. The lane on the right is blocked with the synthesized peptide.



Western blot analysis of the lysates from HepG2 cells using APBB2 antibody.



Immunohistochemistry analysis of paraffin-embedded human breast carcinoma tissue, using APBB2 Antibody. The picture on the right is blocked with the synthesized peptide.