

Anti-FASTKD2 antibody (171-220 aa) (STJ93046)

STJ93046

GENERAL INFORMATION

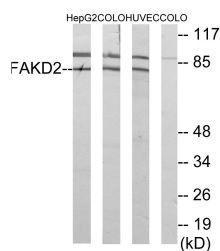
Product Type	Primary antibodies
Short Description	Rabbit polyclonal antibody anti-FAST kinase domain-containing protein 2, mitochondrial (171-220 aa) is suitable for use in Western Blot, Immunohistochemistry, Immunofluorescence and ELISA research applications.
Applications	WB/IHC/IF/ELISA
Host/Source	Rabbit
Reactivity	Human/Rat/Mouse

PRODUCT PROPERTIES

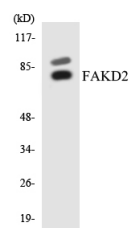
Clonality	Polyclonal
Clone ID	
Concentration	1 mg/mL
Conjugation	Unconjugated
Purification	The antibody was affinity-purified from rabbit antiserum by affinity-chromatography using epitope-specific immunogen.
Dilution Range	WB 1:500-1:2000 ELISA 1:5000 IF 1:50-200
Formulation	Liquid in PBS containing 50% Glycerol, 0.5% BSA and 0.02% Sodium Azide.
Isotype	IgG
Storage Instruction	Store at -20°C for up to 1 year from the date of receipt, and avoid repeat freeze-thaw cycles.

TARGET INFORMATION

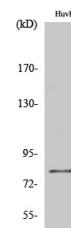
Gene ID	22868
Gene Symbol	FASTKD2
Uniprot ID	FAKD2_HUMAN
Immunogen	The antiserum was produced against synthesized peptide derived from the human FAKD2 at the amino acid range 171-220
Immunogen Region	171-220 aa
Specificity	FASTKD2 Polyclonal Antibody detects endogenous levels of FASTKD2 protein.
Immunogen Sequence	



Western blot analysis of lysates from HUVEC, HepG2, and COLO cells, using FASTKD2 Antibody. The lane on the right is blocked with the synthesized peptide.



Western blot analysis of the lysates from COLO205 cells using FASTKD2 antibody.



Western blot analysis of various cells using FASTKD2 Polyclonal Antibody.