

Anti-FASLG antibody (101-150 aa) (STJ93042)

STJ93042

GENERAL INFORMATION

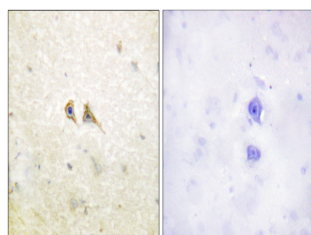
Product Type	Primary antibodies
Short Description	Rabbit polyclonal antibody anti-Tumor necrosis factor ligand superfamily member 6 (101-150 aa) is suitable for use in Western Blot, Immunohistochemistry, Immunofluorescence and ELISA research applications.
Applications	WB/IHC/IF/ELISA
Host/Source	Rabbit
Reactivity	Human/Mouse/Pig

PRODUCT PROPERTIES

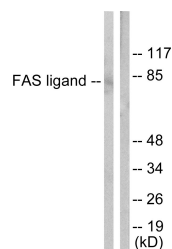
Clonality	Polyclonal
Clone ID	
Concentration	1 mg/mL
Conjugation	Unconjugated
Purification	The antibody was affinity-purified from rabbit antiserum by affinity-chromatography using epitope-specific immunogen.
Dilution	WB 1:500-1:2000
Range	IHC 1:100-1:300 IF 1:200-1:1000 ELISA 1:40000
Formulation	Liquid in PBS containing 50% Glycerol, 0.5% BSA and 0.02% Sodium Azide.
Isotype	IgG
Storage	Store at -20°C for up to 1 year from the date of receipt, and avoid repeat freeze-thaw cycles.
Instruction	

TARGET INFORMATION

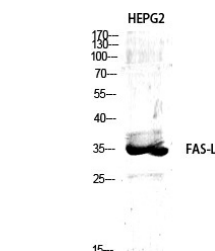
Gene ID	356
Gene Symbol	FASLG
Uniprot ID	TNFL6_HUMAN
Immunogen	The antiserum was produced against synthesized peptide derived from the human FAS ligand at the amino acid range 101-150
Immunogen	101-150 aa
Region	
Specificity	FAS-L Polyclonal Antibody detects endogenous levels of FAS-L protein.
Immunogen	
Sequence	



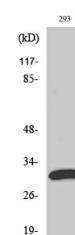
Immunohistochemistry analysis of paraffin-embedded human brain tissue, using FAS ligand Antibody. The picture on the right is blocked with the synthesized peptide.



Western blot analysis of lysates from 293 cells, using FAS ligand Antibody. The lane on the right is blocked with the synthesized peptide.



Western blot analysis of various cells using FAS-L Polyclonal Antibody diluted at 1:1000



Western blot analysis of 293 cells using FAS-L Polyclonal Antibody diluted at 1:1000