

Anti-FANCA antibody (1121-1170 aa) (STJ93039)

STJ93039

GENERAL INFORMATION

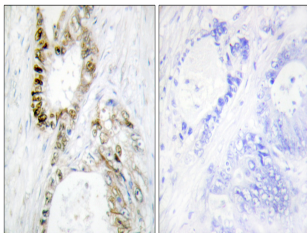
Product Type	Primary antibodies
Short Description	Rabbit polyclonal antibody anti-Fanconi anemia group A protein (1121-1170 aa) is suitable for use in Immunohistochemistry, Immunofluorescence and ELISA research applications.
Applications	IHC/IF/ELISA
Host/Source	Rabbit
Reactivity	Human/Rat/Mouse

PRODUCT PROPERTIES

Clonality	Polyclonal
Clone ID	
Concentration	1 mg/mL
Conjugation	Unconjugated
Purification	The antibody was affinity-purified from rabbit antiserum by affinity-chromatography using epitope-specific immunogen.
Dilution Range	IHC 1:100-1:300 ELISA 1:5000 IF 1:50-200
Formulation	Liquid in PBS containing 50% Glycerol, 0.5% BSA and 0.02% Sodium Azide.
Isotype	IgG
Storage Instruction	Store at -20°C for up to 1 year from the date of receipt, and avoid repeat freeze-thaw cycles.

TARGET INFORMATION

Gene ID	2175
Gene Symbol	FANCA
Uniprot ID	FANCA_HUMAN
Immunogen	The antiserum was produced against synthesized peptide derived from the human FANCA at the amino acid range 1121-1170
Immunogen Region	1121-1170 aa
Specificity	FANCA Polyclonal Antibody detects endogenous levels of FANCA protein.
Immunogen Sequence	



Immunohistochemistry analysis of paraffin-embedded human colon carcinoma, using FANCA Antibody. The picture on the right is blocked with the synthesized peptide.