

Anti-EXO1 antibody (61-110 aa) (STJ93011)

STJ93011

GENERAL INFORMATION

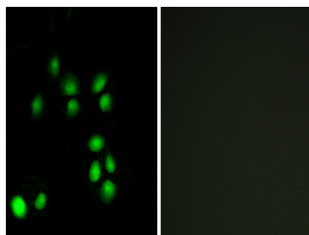
Product Type	Primary antibodies
Short Description	Rabbit polyclonal antibody anti-Exonuclease 1 (61-110 aa) is suitable for use in Western Blot, Immunofluorescence and ELISA research applications.
Applications	WB/IF/ELISA
Host/Source	Rabbit
Reactivity	Human/Mouse

PRODUCT PROPERTIES

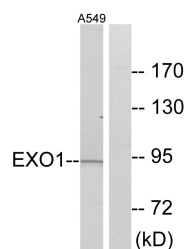
Clonality	Polyclonal
Clone ID	
Concentration	1 mg/mL
Conjugation	Unconjugated
Purification	The antibody was affinity-purified from rabbit antiserum by affinity-chromatography using epitope-specific immunogen.
Dilution Range	WB 1:500-1:2000 IF 1:200-1:1000 ELISA 1:10000
Formulation	Liquid in PBS containing 50% Glycerol, 0.5% BSA and 0.02% Sodium Azide.
Isotype	IgG
Storage Instruction	Store at -20°C for up to 1 year from the date of receipt, and avoid repeat freeze-thaw cycles.

TARGET INFORMATION

Gene ID	9156
Gene Symbol	EXO1
Uniprot ID	EXO1_HUMAN
Immunogen	The antiserum was produced against synthesized peptide derived from the human EXO1 at the amino acid range 61-110
Immunogen Region	61-110 aa
Specificity	Exo1 Polyclonal Antibody detects endogenous levels of Exo1 protein.
Immunogen Sequence	



Immunofluorescence analysis of A549 cells, using EXO1 Antibody. The picture on the right is blocked with the synthesized peptide.



Western blot analysis of lysates from A549 cells, using EXO1 Antibody. The lane on the right is blocked with the synthesized peptide.



Western blot analysis of various cells using Exo1 Polyclonal Antibody cells nucleus extracted by Minute TM Cytoplasmic and Nuclear Fractionation kit (SC-003, Inventibiotech, MN, USA).