

Anti-ETNK2 antibody (51-100 aa) (STJ93006)

STJ93006

GENERAL INFORMATION

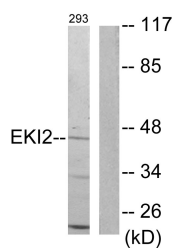
| | |
|--------------------------|--|
| Product Type | Primary antibodies |
| Short Description | Rabbit polyclonal antibody anti-Ethanolamine kinase 2 (51-100 aa) is suitable for use in Western Blot, Immunohistochemistry, Immunofluorescence and ELISA research applications. |
| Applications | WB/IHC/IF/ELISA |
| Host/Source | Rabbit |
| Reactivity | Human/Mouse |

PRODUCT PROPERTIES

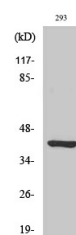
| | |
|----------------------------|---|
| Clonality | Polyclonal |
| Clone ID | |
| Concentration | 1 mg/mL |
| Conjugation | Unconjugated |
| Purification | The antibody was affinity-purified from rabbit antiserum by affinity-chromatography using epitope-specific immunogen. |
| Dilution Range | WB 1:500-1:2000 ELISA 1:5000 IF 1:50-200 |
| Formulation | Liquid in PBS containing 50% Glycerol, 0.5% BSA and 0.02% Sodium Azide. |
| Isotype | IgG |
| Storage Instruction | Store at -20°C for up to 1 year from the date of receipt, and avoid repeat freeze-thaw cycles. |

TARGET INFORMATION

| | |
|---------------------------|---|
| Gene ID | 55224 |
| Gene Symbol | ETNK2 |
| Uniprot ID | EKI2_HUMAN |
| Immunogen | The antiserum was produced against synthesized peptide derived from the human EK12 at the amino acid range 51-100 |
| Immunogen Region | 51-100 aa |
| Specificity | Ethanolamine kinase 2 Polyclonal Antibody detects endogenous levels of Ethanolamine kinase 2 protein. |
| Immunogen Sequence | |



Western blot analysis of lysates from 293 cells, using EK12 Antibody. The lane on the right is blocked with the synthesized peptide.



Western blot analysis of various cells using Ethanolamine kinase 2 Polyclonal Antibody