

Anti-MAPK15 antibody (361-410 aa) (STJ92996)

STJ92996

GENERAL INFORMATION

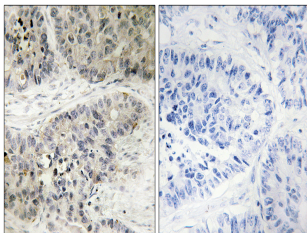
Product Type	Primary antibodies
Short Description	Rabbit polyclonal antibody anti-Mitogen-activated protein kinase 15 (361-410 aa) is suitable for use in Immunohistochemistry, Immunofluorescence and ELISA research applications.
Applications	IHC/IF/ELISA
Host/Source	Rabbit
Reactivity	Human/Rat/Mouse

PRODUCT PROPERTIES

Clonality	Polyclonal
Clone ID	
Concentration	1 mg/mL
Conjugation	Unconjugated
Purification	The antibody was affinity-purified from rabbit antiserum by affinity-chromatography using epitope-specific immunogen.
Dilution Range	IHC 1:100-1:300 IF 1:200-1:1000 ELISA 1:5000
Formulation	Liquid in PBS containing 50% Glycerol, 0.5% BSA and 0.02% Sodium Azide.
Isotype	IgG
Storage Instruction	Store at -20°C for up to 1 year from the date of receipt, and avoid repeat freeze-thaw cycles.

TARGET INFORMATION

Gene ID	225689
Gene Symbol	MAPK15
Uniprot ID	MK15_HUMAN
Immunogen	The antiserum was produced against synthesized peptide derived from the human MAPK15 at the amino acid range 361-410
Immunogen Region	361-410 aa
Specificity	ERK 8 Polyclonal Antibody detects endogenous levels of ERK 8 protein.
Immunogen Sequence	



Immunohistochemistry analysis of paraffin-embedded human lung carcinoma, using MAPK15 Antibody. The picture on the right is blocked with the synthesized peptide.