

Anti-MAPK1 antibody (136-185 aa) (STJ92992)

STJ92992

GENERAL INFORMATION

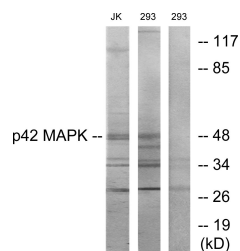
Product Type	Primary antibodies
Short Description	Rabbit polyclonal antibody anti-Mitogen-activated protein kinase 1 (136-185 aa) is suitable for use in Western Blot, Immunohistochemistry, Immunofluorescence and ELISA research applications.
Applications	WB/IHC/IF/ELISA
Host/Source	Rabbit
Reactivity	Human/Mouse/Rat

PRODUCT PROPERTIES

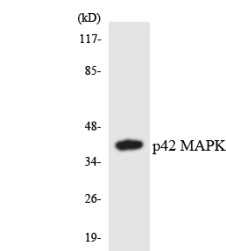
Clonality	Polyclonal
Clone ID	
Concentration	1 mg/mL
Conjugation	Unconjugated
Purification	The antibody was affinity-purified from rabbit antiserum by affinity-chromatography using epitope-specific immunogen.
Dilution Range	WB 1:500-1:2000 IHC 1:100-1:300 IF 1:200-1:1000 ELISA 1:5000
Formulation	Liquid in PBS containing 50% Glycerol, 0.5% BSA and 0.02% Sodium Azide.
Isotype	IgG
Storage Instruction	Store at -20°C for up to 1 year from the date of receipt, and avoid repeat freeze-thaw cycles.

TARGET INFORMATION

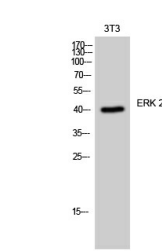
Gene ID	5594
Gene Symbol	MAPK1
Uniprot ID	MK01_HUMAN
Immunogen	The antiserum was produced against synthesized peptide derived from the human p42 MAPK at the amino acid range 136-185
Immunogen Region	136-185 aa
Specificity	ERK 2 Polyclonal Antibody detects endogenous levels of ERK 2 protein.
Immunogen Sequence	



Western blot analysis of lysates from Jurkat and 293 cells, using p42 MAPK Antibody. The lane on the right is blocked with the synthesized peptide.



Western blot analysis of the lysates from HUVEC cells using p42 MAPK antibody.



Western blot analysis of 3T3 cells using ERK 2 Polyclonal Antibody diluted at 1/14 2000

This product is suitable for in-vitro studies under the RESEARCH USE ONLY [RUO] licence. This product must not be used as for diagnostic or other medical purposes.
St John's Laboratory Ltd, Knowledge Dock Business Centre, University Way, London, E16 2RD | Tel: 0208 223 3081