

## Anti-ERGIC3 antibody (321-370 aa) (STJ92985)

STJ92985

### GENERAL INFORMATION

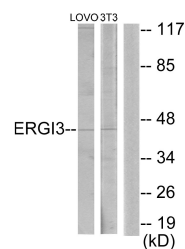
<b>Product Type</b>	Primary antibodies
<b>Short Description</b>	Rabbit polyclonal antibody anti-Endoplasmic reticulum-Golgi intermediate compartment protein 3 (321-370 aa) is suitable for use in Western Blot, Immunohistochemistry, Immunofluorescence and ELISA research applications.
<b>Applications</b>	WB/IHC/IF/ELISA
<b>Host/Source</b>	Rabbit
<b>Reactivity</b>	Human/Mouse

### PRODUCT PROPERTIES

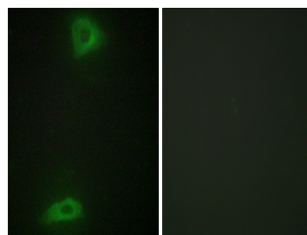
<b>Clonality</b>	Polyclonal
<b>Clone ID</b>	
<b>Concentration</b>	1 mg/mL
<b>Conjugation</b>	Unconjugated
<b>Purification</b>	The antibody was affinity-purified from rabbit antiserum by affinity-chromatography using epitope-specific immunogen.
<b>Dilution</b>	WB 1:500-1:2000
<b>Range</b>	IHC 1:100-1:300 IF 1:200-1:1000 ELISA 1:20000
<b>Formulation</b>	Liquid in PBS containing 50% Glycerol, 0.5% BSA and 0.02% Sodium Azide.
<b>Isotype</b>	IgG
<b>Storage</b>	Store at -20°C for up to 1 year from the date of receipt, and avoid repeat freeze-thaw cycles.
<b>Instruction</b>	

### TARGET INFORMATION

<b>Gene ID</b>	51614
<b>Gene Symbol</b>	ERGIC3
<b>Uniprot ID</b>	ERGIC3_HUMAN
<b>Immunogen</b>	The antiserum was produced against synthesized peptide derived from the human ERGIC3 at the amino acid range 321-370
<b>Immunogen</b>	321-370 aa
<b>Region</b>	
<b>Specificity</b>	ERGIC-3 Polyclonal Antibody detects endogenous levels of ERGIC-3 protein.
<b>Immunogen</b>	
<b>Sequence</b>	



Western blot analysis of lysates from LOVO and NIH/3T3 cells, using ERGIC3 Antibody. The lane on the right is blocked with the synthesized peptide.



Immunofluorescence analysis of HepG2 cells, using ERGIC3 Antibody. The picture on the right is blocked with the synthesized peptide.