

Anti-ERBB4 antibody (1250-1299 aa) (STJ92978)

STJ92978

GENERAL INFORMATION

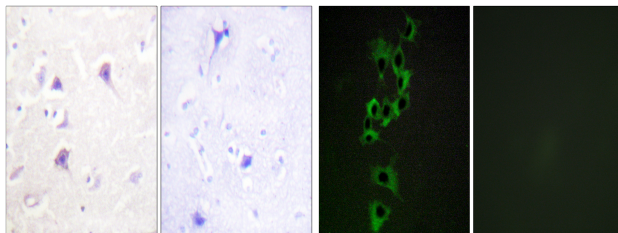
Product Type	Primary antibodies
Short Description	Rabbit polyclonal antibody anti-Receptor tyrosine-protein kinase erbB-4 (1250-1299 aa) is suitable for use in Western Blot, Immunohistochemistry, Immunofluorescence and ELISA research applications.
Applications	WB/IHC/IF/ELISA
Host/Source	Rabbit
Reactivity	Human/Mouse/Rat

PRODUCT PROPERTIES

Clonality	Polyclonal
Clone ID	
Concentration	1 mg/mL
Conjugation	Unconjugated
Purification	The antibody was affinity-purified from rabbit antiserum by affinity-chromatography using epitope-specific immunogen.
Dilution	IHC 1:100-1:300
Range	IF 1:200-1:1000 ELISA 1:20000 WB 1:500-2000
Formulation	Liquid in PBS containing 50% Glycerol, 0.5% BSA and 0.02% Sodium Azide.
Isotype	IgG
Storage Instruction	Store at -20°C for up to 1 year from the date of receipt, and avoid repeat freeze-thaw cycles.

TARGET INFORMATION

Gene ID	2066
Gene Symbol	ERBB4
Uniprot ID	ERBB4_HUMAN
Immunogen	The antiserum was produced against synthesized peptide derived from the human HER4 at the amino acid range 1250-1299
Immunogen Region	1250-1299 aa
Specificity	ErbB-4 Polyclonal Antibody detects endogenous levels of ErbB-4 protein.
Immunogen Sequence	



Immunohistochemistry analysis of paraffin-embedded human brain tissue, using HER4 Antibody. The picture on the right is blocked with the synthesized peptide.

Immunofluorescence analysis of HepG2 cells, using HER4 Antibody. The picture on the right is blocked with the synthesized peptide.