

Anti-ERBB3 antibody (1-50 aa) (STJ92976)

STJ92976

GENERAL INFORMATION

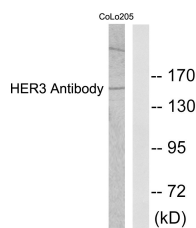
Product Type	Primary antibodies
Short Description	Rabbit polyclonal antibody anti-Receptor tyrosine-protein kinase erbB-3 (1-50 aa) is suitable for use in Western Blot, Immunohistochemistry, Immunofluorescence and ELISA research applications.
Applications	WB/IHC/IF/ELISA
Host/Source	Rabbit
Reactivity	Human/Rat/Mouse

PRODUCT PROPERTIES

Clonality	Polyclonal
Clone ID	
Concentration	1 mg/mL
Conjugation	Unconjugated
Purification	The antibody was affinity-purified from rabbit antiserum by affinity-chromatography using epitope-specific immunogen.
Dilution Range	WB 1:500-1:2000 IHC 1:100-1:300 ELISA 1:20000 IF 1:50-200
Formulation	Liquid in PBS containing 50% Glycerol, 0.5% BSA and 0.02% Sodium Azide.
Isotype	IgG
Storage Instruction	Store at -20°C for up to 1 year from the date of receipt, and avoid repeat freeze-thaw cycles.

TARGET INFORMATION

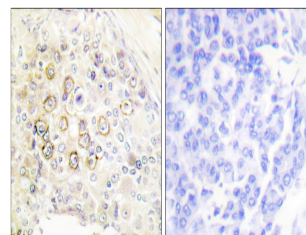
Gene ID	2065
Gene Symbol	ERBB3
Uniprot ID	ERBB3_HUMAN
Immunogen	The antiserum was produced against synthesized peptide derived from the human HER3 at the amino acid range 1-50
Immunogen Region	1-50 aa
Specificity	ErbB-3 Polyclonal Antibody detects endogenous levels of ErbB-3 protein.
Immunogen Sequence	



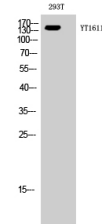
Western blot analysis of lysates from COLO205 cells, using HER3 Antibody. The lane on the right is blocked with the synthesized peptide.



Western blot analysis of k562 mouse-heart mouse-spleen mouse-lung cells using ErbB-3 Polyclonal Antibody diluted at 1/1000 cells nucleus extracted by Minute TM Cytoplasmic and Nuclear Fractionation kit (SC-003, Inventibiotec, MN, USA).



Immunohistochemistry analysis of paraffin-embedded human breast carcinoma tissue, using HER3 Antibody. The picture on the right is blocked with the synthesized peptide.



Western blot analysis of 293T cells using ErbB-3 Polyclonal Antibody diluted at 1/1000 cells nucleus extracted by Minute TM Cytoplasmic and Nuclear Fractionation kit (SC-003, Inventibiotec, MN, USA).

This product is suitable for in-vitro studies under the RESEARCH USE ONLY [RUO] licence. This product must not be used as for diagnostic or other medical purposes.

St John's Laboratory Ltd, Knowledge Dock Business Centre, University Way, London, E16 2RD | Tel: 0208 223 3081