

Anti-EPN3 antibody (401-450 aa) (STJ92968)

STJ92968

GENERAL INFORMATION

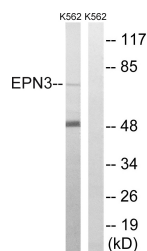
Product Type	Primary antibodies
Short Description	Rabbit polyclonal antibody anti-Epsin-3 (401-450 aa) is suitable for use in Western Blot, Immunohistochemistry, Immunofluorescence and ELISA research applications.
Applications	WB/IHC/IF/ELISA
Host/Source	Rabbit
Reactivity	Human/Rat/Mouse

PRODUCT PROPERTIES

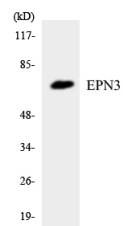
Clonality	Polyclonal
Clone ID	
Concentration	1 mg/mL
Conjugation	Unconjugated
Purification	The antibody was affinity-purified from rabbit antiserum by affinity-chromatography using epitope-specific immunogen.
Dilution Range	WB 1:500-1:2000 IHC 1:100-1:300 ELISA 1:10000 IF 1:50-200
Formulation	Liquid in PBS containing 50% Glycerol, 0.5% BSA and 0.02% Sodium Azide.
Isotype	IgG
Storage Instruction	Store at -20°C for up to 1 year from the date of receipt, and avoid repeat freeze-thaw cycles.

TARGET INFORMATION

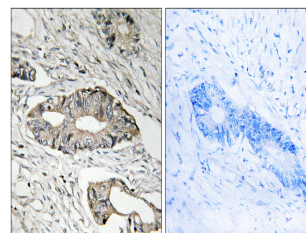
Gene ID	55040
Gene Symbol	EPN3
Uniprot ID	EPN3_HUMAN
Immunogen	The antiserum was produced against synthesized peptide derived from the human EPN3 at the amino acid range 401-450
Immunogen Region	401-450 aa
Specificity	Epsin 3 Polyclonal Antibody detects endogenous levels of Epsin 3 protein.
Immunogen Sequence	



Western blot analysis of lysates from K562 cells, using EPN3 Antibody. The lane on the right is blocked with the synthesized peptide.



Western blot analysis of the lysates from COLO205 cells using EPN3 antibody.



Immunohistochemistry analysis of paraffin-embedded human colon carcinoma tissue, using EPN3 Antibody. The picture on the right is blocked with the synthesized peptide.