

Anti-EPOR antibody (341-390 aa) (STJ92962)

STJ92962

GENERAL INFORMATION

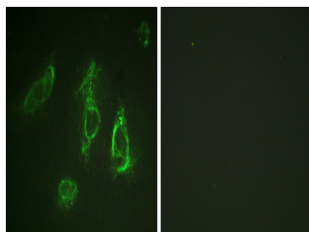
Product Type	Primary antibodies
Short Description	Rabbit polyclonal antibody anti-Erythropoietin receptor (341-390 aa) is suitable for use in Western Blot, Immunofluorescence and ELISA research applications.
Applications	WB/IF/ELISA
Host/Source	Rabbit
Reactivity	Human/Mouse/Rat/Monkey

PRODUCT PROPERTIES

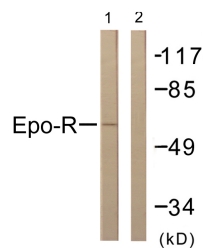
Clonality	Polyclonal
Clone ID	
Concentration	1 mg/mL
Conjugation	Unconjugated
Purification	The antibody was affinity-purified from rabbit antiserum by affinity-chromatography using epitope-specific immunogen.
Dilution Range	WB 1:500-1:2000 IF 1:200-1:1000 ELISA 1:40000
Formulation	Liquid in PBS containing 50% Glycerol, 0.5% BSA and 0.02% Sodium Azide.
Isotype	IgG
Storage	Store at -20°C for up to 1 year from the date of receipt, and avoid repeat freeze-thaw cycles.
Instruction	

TARGET INFORMATION

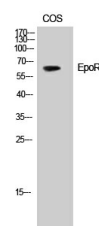
Gene ID	2057
Gene Symbol	EPOR
Uniprot ID	EPOR_HUMAN
Immunogen	The antiserum was produced against synthesized peptide derived from the human Epo-R at the amino acid range 341-390
Immunogen Region	341-390 aa
Specificity	EpoR Polyclonal Antibody detects endogenous levels of EpoR protein.
Immunogen Sequence	



Immunofluorescence analysis of HeLa cells, using Epo-R Antibody. The picture on the right is blocked with the synthesized peptide.



Western blot analysis of lysates from COS7 cells, treated with EPO 20U/ml 15', using Epo-R Antibody. The lane on the right is blocked with the synthesized peptide.



Western blot analysis of HepG2 cells using EpoR Polyclonal Antibody

This product is suitable for in-vitro studies under the RESEARCH USE ONLY [RUO] licence. This product must not be used as for diagnostic or other medical purposes.
St John's Laboratory Ltd, Knowledge Dock Business Centre, University Way, London, E16 2RD | Tel: 0208 223 3081