

## Anti-EFNA5 antibody (31-80 aa) (STJ92958)

STJ92958

### GENERAL INFORMATION

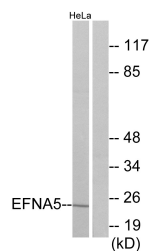
<b>Product Type</b>	Primary antibodies
<b>Short Description</b>	Rabbit polyclonal antibody anti-Ephrin-A5 (31-80 aa) is suitable for use in Western Blot, Immunohistochemistry, Immunofluorescence and ELISA research applications.
<b>Applications</b>	WB/IHC/IF/ELISA
<b>Host/Source</b>	Rabbit
<b>Reactivity</b>	Human/Mouse/Rat

### PRODUCT PROPERTIES

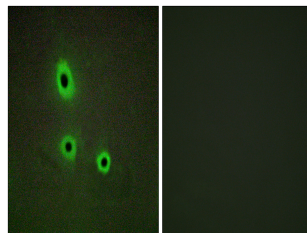
<b>Clonality</b>	Polyclonal
<b>Clone ID</b>	
<b>Concentration</b>	1 mg/mL
<b>Conjugation</b>	Unconjugated
<b>Purification</b>	The antibody was affinity-purified from rabbit antiserum by affinity-chromatography using epitope-specific immunogen.
<b>Dilution Range</b>	WB 1:500-1:2000 IHC 1:100-1:300 IF 1:200-1:1000 ELISA 1:40000
<b>Formulation</b>	Liquid in PBS containing 50% Glycerol, 0.5% BSA and 0.02% Sodium Azide.
<b>Isotype</b>	IgG
<b>Storage Instruction</b>	Store at -20°C for up to 1 year from the date of receipt, and avoid repeat freeze-thaw cycles.

### TARGET INFORMATION

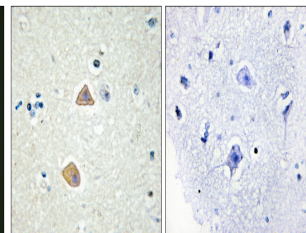
<b>Gene ID</b>	1946
<b>Gene Symbol</b>	EFNA5
<b>Uniprot ID</b>	EFNA5_HUMAN
<b>Immunogen</b>	The antiserum was produced against synthesized peptide derived from the human EFNA5 at the amino acid range 31-80
<b>Immunogen Region</b>	31-80 aa
<b>Specificity</b>	Ephrin-A5 Polyclonal Antibody detects endogenous levels of Ephrin-A5 protein.
<b>Immunogen Sequence</b>	



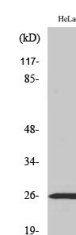
Western blot analysis of lysates from HeLa cells, using EFNA5 Antibody. The lane on the right is blocked with the synthesized peptide.



Immunofluorescence analysis of A549 cells, using EFNA5 Antibody. The picture on the right is blocked with the synthesized peptide.



Immunohistochemistry analysis of paraffin-embedded human brain tissue, using EFNA5 Antibody. The picture on the right is blocked with the synthesized peptide.



Western blot analysis of various cells using Ephrin-A5 Polyclonal Antibody