

Anti-EPHA1 antibody (541-590 aa) (STJ92938)

STJ92938

GENERAL INFORMATION

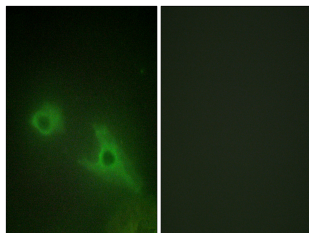
Product Type	Primary antibodies
Short Description	Rabbit polyclonal antibody anti-Ephrin type-A receptor 1 (541-590 aa) is suitable for use in Western Blot, Immunohistochemistry, Immunofluorescence and ELISA research applications.
Applications	WB/IHC/IF/ELISA
Host/Source	Rabbit
Reactivity	Human/Rat/Mouse

PRODUCT PROPERTIES

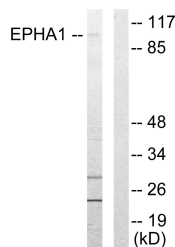
Clonality	Polyclonal
Clone ID	
Concentration	1 mg/mL
Conjugation	Unconjugated
Purification	The antibody was affinity-purified from rabbit antiserum by affinity-chromatography using epitope-specific immunogen.
Dilution Range	WB 1:500-1:2000 IHC 1:100-1:300 IF 1:200-1:1000 ELISA 1:20000
Formulation	Liquid in PBS containing 50% Glycerol, 0.5% BSA and 0.02% Sodium Azide.
Isotype	IgG
Storage Instruction	Store at -20°C for up to 1 year from the date of receipt, and avoid repeat freeze-thaw cycles.

TARGET INFORMATION

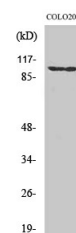
Gene ID	2041
Gene Symbol	EPHA1
Uniprot ID	EPHA1_HUMAN
Immunogen	The antiserum was produced against synthesized peptide derived from the human EPHA1 at the amino acid range 541-590
Immunogen Region	541-590 aa
Specificity	EphA1 Polyclonal Antibody detects endogenous levels of EphA1 protein.
Immunogen Sequence	



Immunofluorescence analysis of HeLa cells, using EPHA1 Antibody. The picture on the right is blocked with the synthesized peptide.



Western blot analysis of lysates from COLO205 cells, using EPHA1 Antibody. The lane on the right is blocked with the synthesized peptide.



Western blot analysis of various cells using EphA1 Polyclonal Antibody