

Anti-PTGER2 antibody (261-310 aa) (STJ92931)

STJ92931

GENERAL INFORMATION

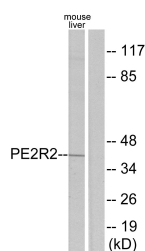
Product Type	Primary antibodies
Short Description	Rabbit polyclonal antibody anti-Prostaglandin E2 receptor EP2 subtype (261-310 aa) is suitable for use in Western Blot, Immunofluorescence and ELISA research applications.
Applications	WB/IF/ELISA
Host/Source	Rabbit
Reactivity	Human/Mouse/Rat

PRODUCT PROPERTIES

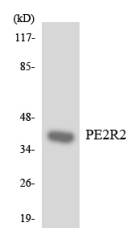
Clonality	Polyclonal
Clone ID	
Concentration	1 mg/mL
Conjugation	Unconjugated
Purification	The antibody was affinity-purified from rabbit antiserum by affinity-chromatography using epitope-specific immunogen.
Dilution Range	WB 1:500-1:2000 IF 1:200-1:1000 ELISA 1:10000
Formulation	Liquid in PBS containing 50% Glycerol, 0.5% BSA and 0.02% Sodium Azide.
Isotype	IgG
Storage Instruction	Store at -20°C for up to 1 year from the date of receipt, and avoid repeat freeze-thaw cycles.

TARGET INFORMATION

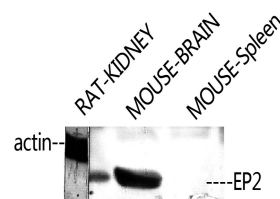
Gene ID	5732
Gene Symbol	PTGER2
Uniprot ID	PE2R2_HUMAN
Immunogen	The antiserum was produced against synthesized peptide derived from the human PE2R2 at the amino acid range 261-310
Immunogen Region	261-310 aa
Specificity	EP2 Polyclonal Antibody detects endogenous levels of EP2 protein.
Immunogen Sequence	



Western blot analysis of lysates from mouse liver, using PE2R2 Antibody. The lane on the right is blocked with the synthesized peptide.



Western blot analysis of the lysates from 293 cells using PE2R2 antibody.



Western blot analysis of RAT-KIDNEY, MOUSE-BRAIN, and MOUSE-Spleen using EP2 Polyclonal Antibody. Antibody was diluted at 1:2000.