

Anti-SH3GL2 antibody (30-110 aa) (STJ92924)

STJ92924

GENERAL INFORMATION

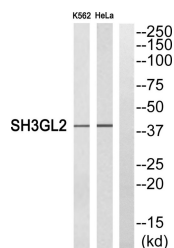
Product Type	Primary antibodies
Short Description	Rabbit polyclonal antibody anti-Endophilin-A1 (30-110 aa) is suitable for use in Western Blot and ELISA research applications.
Applications	WB/ELISA
Host/Source	Rabbit
Reactivity	Human/Mouse/Rat

PRODUCT PROPERTIES

Clonality	Polyclonal
Clone ID	
Concentration	1 mg/mL
Conjugation	Unconjugated
Purification	The antibody was affinity-purified from rabbit antiserum by affinity-chromatography using epitope-specific immunogen.
Dilution Range	WB 1:500-1:2000 ELISA 1:10000
Formulation	Liquid in PBS containing 50% Glycerol, 0.5% BSA and 0.02% Sodium Azide.
Isotype	IgG
Storage Instruction	Store at -20°C for up to 1 year from the date of receipt, and avoid repeat freeze-thaw cycles.

TARGET INFORMATION

Gene ID	6456
Gene Symbol	SH3GL2
Uniprot ID	SH3G2_HUMAN
Immunogen	Synthesized peptide derived from Endophilin I at the amino acid range 30-110
Immunogen Region	30-110 aa
Specificity	Endophilin I Polyclonal Antibody detects endogenous levels of Endophilin I protein.
Immunogen Sequence	



Western blot analysis of SH3GL2 Antibody. The lane on the right is blocked with the SH3GL2 peptide.

This product is suitable for in-vitro studies under the RESEARCH USE ONLY [RUO] licence. This product must not be used as for diagnostic or other medical purposes.
St John's Laboratory Ltd, Knowledge Dock Business Centre, University Way, London, E16 2RD | Tel: 0208 223 3081