

## Anti-MAEA antibody (181-230 aa) (STJ92908)

STJ92908

### GENERAL INFORMATION

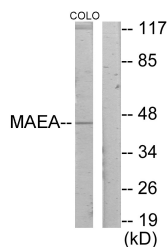
<b>Product Type</b>	Primary antibodies
<b>Short Description</b>	Rabbit polyclonal antibody anti-E3 ubiquitin-protein transferase MAEA (181-230 aa) is suitable for use in Western Blot, Immunohistochemistry, Immunofluorescence and ELISA research applications.
<b>Applications</b>	WB/IHC/IF/ELISA
<b>Host/Source</b>	Rabbit
<b>Reactivity</b>	Human/Mouse/Rat

### PRODUCT PROPERTIES

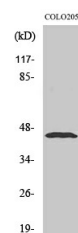
<b>Clonality</b>	Polyclonal
<b>Clone ID</b>	
<b>Concentration</b>	1 mg/mL
<b>Conjugation</b>	Unconjugated
<b>Purification</b>	The antibody was affinity-purified from rabbit antiserum by affinity-chromatography using epitope-specific immunogen.
<b>Dilution</b>	WB 1:500-1:2000
<b>Range</b>	IHC 1:100-1:300 ELISA 1:20000 IF 1:50-200
<b>Formulation</b>	Liquid in PBS containing 50% Glycerol, 0.5% BSA and 0.02% Sodium Azide.
<b>Isotype</b>	IgG
<b>Storage Instruction</b>	Store at -20°C for up to 1 year from the date of receipt, and avoid repeat freeze-thaw cycles.

### TARGET INFORMATION

<b>Gene ID</b>	10296
<b>Gene Symbol</b>	MAEA
<b>Uniprot ID</b>	MAEA_HUMAN
<b>Immunogen</b>	The antiserum was produced against synthesized peptide derived from the human MAEA at the amino acid range 181-230
<b>Immunogen Region</b>	181-230 aa
<b>Specificity</b>	Emp Polyclonal Antibody detects endogenous levels of Emp protein.
<b>Immunogen Sequence</b>	



Western blot analysis of lysates from COLO205 cells, using MAEA Antibody. The lane on the right is blocked with the synthesized peptide.



Western blot analysis of various cells using Emp Polyclonal Antibody diluted at 1/1000