

Anti-BSG antibody (336-385 aa) (STJ92907)

STJ92907

GENERAL INFORMATION

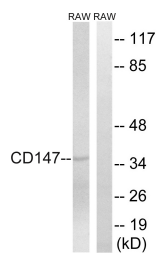
Product Type	Primary antibodies
Short Description	Rabbit polyclonal antibody anti-Basigin (336-385 aa) is suitable for use in Western Blot, Immunohistochemistry, Immunofluorescence and ELISA research applications.
Applications	WB/IHC/IF/ELISA
Host/Source	Rabbit
Reactivity	Human/Mouse/Rat

PRODUCT PROPERTIES

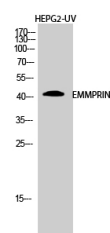
Clonality	Polyclonal
Clone ID	
Concentration	1 mg/mL
Conjugation	Unconjugated
Purification	The antibody was affinity-purified from rabbit antiserum by affinity-chromatography using epitope-specific immunogen.
Dilution Range	WB 1:500-1:2000 IHC 1:100-1:300 ELISA 1:10000 IF 1:50-200
Formulation	Liquid in PBS containing 50% Glycerol, 0.5% BSA and 0.02% Sodium Azide.
Isotype	IgG
Storage Instruction	Store at -20°C for up to 1 year from the date of receipt, and avoid repeat freeze-thaw cycles.

TARGET INFORMATION

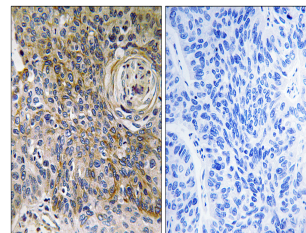
Gene ID	682
Gene Symbol	BSG
Uniprot ID	BASI_HUMAN
Immunogen	The antiserum was produced against synthesized peptide derived from the human CD147 at the amino acid range 336-385
Immunogen Region	336-385 aa
Specificity	EMMPRIN Polyclonal Antibody detects endogenous levels of EMMPRIN protein.
Immunogen Sequence	



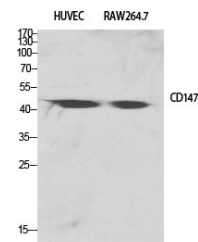
Western blot analysis of lysates from RAW264.7 cells, using CD147 Antibody. The lane on the right is blocked with the synthesized peptide.



Western blot analysis of HEPG2-UV cells using EMMPRIN Polyclonal Antibody diluted at 1:1000



Immunohistochemistry analysis of paraffin-embedded human breast carcinoma tissue, using CD147 Antibody. The picture on the right is blocked with the synthesized peptide.



Western blot analysis of various cells using EMMPRIN Polyclonal Antibody diluted at 1:1000