

Anti-ELOVL2 antibody (250-296 aa) (STJ92901)

STJ92901

GENERAL INFORMATION

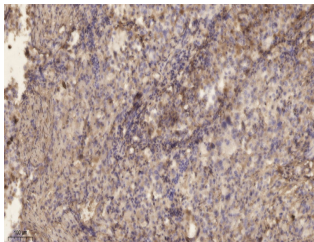
Product Type	Primary antibodies
Short Description	Rabbit polyclonal antibody anti-Elongation of very long chain fatty acids protein 2 (250-296 aa) is suitable for use in Immunohistochemistry, Immunofluorescence and ELISA research applications.
Applications	IHC/IF/ELISA
Host/Source	Rabbit
Reactivity	Human/Rat/Mouse

PRODUCT PROPERTIES

Clonality	Polyclonal
Clone ID	
Concentration	1 mg/mL
Conjugation	Unconjugated
Purification	The antibody was affinity-purified from rabbit antiserum by affinity-chromatography using epitope-specific immunogen.
Dilution Range	IHC 1:100-1:300 ELISA 1:10000 IF 1:50-200
Formulation	Liquid in PBS containing 50% Glycerol, 0.5% BSA and 0.02% Sodium Azide.
Isotype	IgG
Storage Instruction	Store at -20°C for up to 1 year from the date of receipt, and avoid repeat freeze-thaw cycles.

TARGET INFORMATION

Gene ID	54898
Gene Symbol	ELOVL2
Uniprot ID	ELOV2_HUMAN
Immunogen	The antiserum was produced against synthesized peptide derived from the human ELOVL2 at the amino acid range 250-296
Immunogen Region	250-296 aa
Specificity	ELOVL2 Polyclonal Antibody detects endogenous levels of ELOVL2 protein.
Immunogen Sequence	



Immunohistochemical analysis of paraffin-embedded human lung cancer. 1. Antibody was diluted at 1:200 (4Å°C overnight). 2. Tris-EDTA, pH9.0 was used for antigen retrieval. 3. Secondary antibody was diluted at 1:200 (room temperature, 45min).