

Anti-ELOA antibody (131-180 aa) (STJ92897)

STJ92897

GENERAL INFORMATION

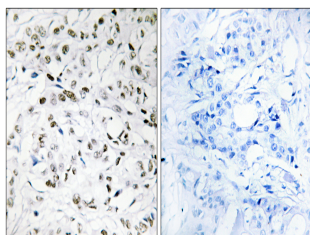
Product Type	Primary antibodies
Short Description	Rabbit polyclonal antibody anti-Elongin-A (131-180 aa) is suitable for use in Western Blot, Immunohistochemistry, Immunofluorescence and ELISA research applications.
Applications	WB/IHC/IF/ELISA
Host/Source	Rabbit
Reactivity	Human/Mouse/Rat

PRODUCT PROPERTIES

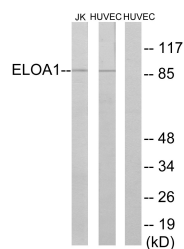
Clonality	Polyclonal
Clone ID	
Concentration	1 mg/mL
Conjugation	Unconjugated
Purification	The antibody was affinity-purified from rabbit antiserum by affinity-chromatography using epitope-specific immunogen.
Dilution Range	WB 1:500-1:2000 IHC 1:100-1:300 ELISA 1:5000 IF 1:50-200
Formulation	Liquid in PBS containing 50% Glycerol, 0.5% BSA and 0.02% Sodium Azide.
Isotype	IgG
Storage Instruction	Store at -20°C for up to 1 year from the date of receipt, and avoid repeat freeze-thaw cycles.

TARGET INFORMATION

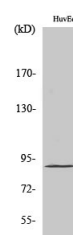
Gene ID	6924
Gene Symbol	ELOA
Uniprot ID	ELOA1_HUMAN
Immunogen	The antiserum was produced against synthesized peptide derived from the human TCEB3 at the amino acid range 131-180
Immunogen Region	131-180 aa
Specificity	Elongin A1 Polyclonal Antibody detects endogenous levels of Elongin A1 protein.
Immunogen Sequence	



Immunohistochemistry analysis of paraffin-embedded human breast carcinoma, using ELOA1 Antibody. The picture on the right is blocked with the synthesized peptide.



Western blot analysis of lysates from HUVEC cells and Jurkat cells, using ELOA1 Antibody. The lane on the right is blocked with the synthesized peptide.



Western blot analysis of various cells using Elongin A1 Polyclonal Antibody