

## Anti-EIF4G1 antibody (1074-1123 aa) (STJ92883)

STJ92883

### GENERAL INFORMATION

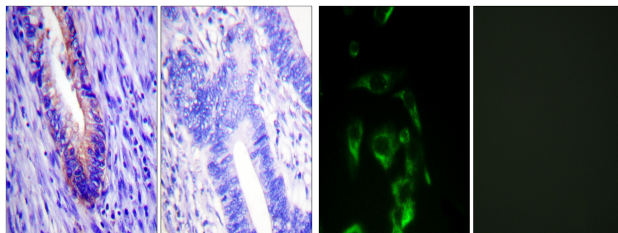
<b>Product Type</b>	Primary antibodies
<b>Short Description</b>	Rabbit polyclonal antibody anti-Eukaryotic translation initiation factor 4 gamma 1 (1074-1123 aa) is suitable for use in Immunohistochemistry, Immunofluorescence, Western Blot and ELISA research applications.
<b>Applications</b>	IHC/IF/WB/ELISA
<b>Host/Source</b>	Rabbit
<b>Reactivity</b>	Human/Mouse/Rat

### PRODUCT PROPERTIES

<b>Clonality</b>	Polyclonal
<b>Clone ID</b>	
<b>Concentration</b>	1 mg/mL
<b>Conjugation</b>	Unconjugated
<b>Purification</b>	The antibody was affinity-purified from rabbit antiserum by affinity-chromatography using epitope-specific immunogen.
<b>Dilution</b>	WB 1:500-2000
<b>Range</b>	IHC 1:100-1:300 IF 1:200-1:1000 ELISA 1:5000
<b>Formulation</b>	Liquid in PBS containing 50% Glycerol, 0.5% BSA and 0.02% Sodium Azide.
<b>Isotype</b>	IgG
<b>Storage Instruction</b>	Store at -20°C for up to 1 year from the date of receipt, and avoid repeat freeze-thaw cycles.

### TARGET INFORMATION

<b>Gene ID</b>	1981
<b>Gene Symbol</b>	EIF4G1
<b>Uniprot ID</b>	IF4G1_HUMAN
<b>Immunogen</b>	The antiserum was produced against synthesized peptide derived from the human eIF4G at the amino acid range 1074-1123
<b>Immunogen Region</b>	1074-1123 aa
<b>Specificity</b>	eIF4G Polyclonal Antibody detects endogenous levels of eIF4G protein.
<b>Immunogen Sequence</b>	



Immunohistochemistry analysis of paraffin-embedded human colon carcinoma tissue, using eIF4G Antibody. The picture on the right is blocked with the synthesized peptide.

Immunofluorescence analysis of HeLa cells, using eIF4G Antibody. The picture on the right is blocked with the synthesized peptide.