

## Anti-EIF2S1 antibody (21-70 aa) (STJ92872)

STJ92872

### GENERAL INFORMATION

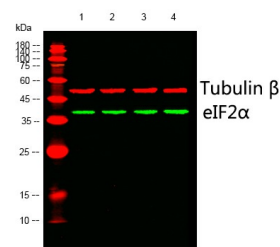
<b>Product Type</b>	Primary antibodies
<b>Short Description</b>	Rabbit polyclonal antibody anti-Eukaryotic translation initiation factor 2 subunit 1 (21-70 aa) is suitable for use in Immunofluorescence, Western Blot, Immunohistochemistry and ELISA research applications.
<b>Applications</b>	IF/WB/IHC/ELISA
<b>Host/Source</b>	Rabbit
<b>Reactivity</b>	Human/Mouse/Rat/Monkey/Fish

### PRODUCT PROPERTIES

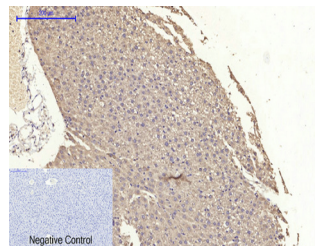
<b>Clonality</b>	Polyclonal
<b>Clone ID</b>	
<b>Concentration</b>	1 mg/mL
<b>Conjugation</b>	Unconjugated
<b>Purification</b>	The antibody was affinity-purified from rabbit antiserum by affinity-chromatography using epitope-specific immunogen.
<b>Dilution</b>	IF 1:50-200
<b>Range</b>	WB 1:500-1:2000 IHC 1:100-1:300 ELISA 1:10000
<b>Formulation</b>	Liquid in PBS containing 50% Glycerol, 0.5% BSA and 0.02% Sodium Azide.
<b>Isotype</b>	IgG
<b>Storage</b>	Store at -20°C for up to 1 year from the date of receipt, and avoid repeat freeze-thaw cycles.
<b>Instruction</b>	

### TARGET INFORMATION

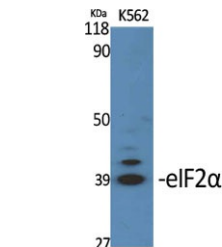
<b>Gene ID</b>	1965
<b>Gene Symbol</b>	EIF2S1
<b>Uniprot ID</b>	IF2A_HUMAN
<b>Immunogen</b>	The antiserum was produced against synthesized peptide derived from the human eIF2 alpha at the amino acid range 21-70
<b>Immunogen</b>	21-70 aa
<b>Region</b>	
<b>Specificity</b>	eIF2 Alpha Polyclonal Antibody detects endogenous levels of eIF2 Alpha protein.
<b>Immunogen</b>	
<b>Sequence</b>	



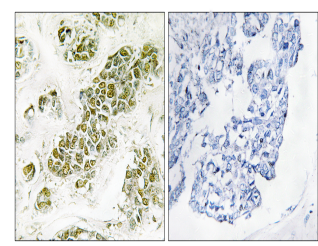
Western blot analysis of lysates from 1) MCF-7, 2) A549, 3) K562, 4) HEK293 cells. (Green) primary antibody was diluted at 1:1000. 4A°C over night. Dylight 800 secondary antibody (NA) was diluted at 1:10000, 37A°C 1hour. (Red) Tubulin Beta monoclonal antibody (SG3) (STJ96932) antibody was diluted at 1:5000 as loading control. 4A°C over night. Dylight 680 secondary antibody (NA) was diluted at 1:10000, 37A°C 1hour.



Immunohistochemical analysis of paraffin-embedded Rat-liver tissue. 1. eIF2 Alpha Polyclonal Antibody was diluted at 1:200 (4A°C, overnight). 2. Sodium citrate pH 6.0 was used for antibody retrieval (98A°C, 20min). 3. Secondary antibody was diluted at 1:200 (room temperature, 30min). Negative control was used by secondary antibody only.



Western blot analysis of various cells using eIF2 Alpha Polyclonal Antibody diluted at 1/4 2000



Immunohistochemistry analysis of paraffin-embedded human breast carcinoma tissue, using eIF2 alpha Antibody. The picture on the right is blocked with the synthesized peptide.

This product is suitable for in-vitro studies under the RESEARCH USE ONLY [RUO] licence. This product must not be used as for diagnostic or other medical purposes.  
St John's Laboratory Ltd, Knowledge Dock Business Centre, University Way, London, E16 2RD | Tel: 0208 223 3081