

Anti-eIF2B3 antibody (240-320 aa) (STJ92870)

STJ92870

GENERAL INFORMATION

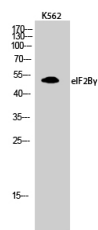
Product Type	Primary antibodies
Short Description	Rabbit polyclonal antibody anti-Translation initiation factor eIF-2B subunit gamma (240-320 aa) is suitable for use in Western Blot and ELISA research applications.
Applications	WB/ELISA
Host/Source	Rabbit
Reactivity	Human/Mouse

PRODUCT PROPERTIES

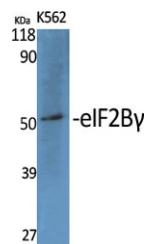
Clonality	Polyclonal
Clone ID	
Concentration	1 mg/mL
Conjugation	Unconjugated
Purification	The antibody was affinity-purified from rabbit antiserum by affinity-chromatography using epitope-specific immunogen.
Dilution Range	WB 1:500-1:2000 ELISA 1:5000
Formulation	Liquid in PBS containing 50% Glycerol, 0.5% BSA and 0.02% Sodium Azide.
Isotype	IgG
Storage	Store at -20°C for up to 1 year from the date of receipt, and avoid repeat freeze-thaw cycles.
Instruction	

TARGET INFORMATION

Gene ID	8891
Gene Symbol	EIF2B3
Uniprot ID	E12BG_HUMAN
Immunogen	Synthesized peptide derived from eIF2B Gamma at the amino acid range 240-320
Immunogen Region	240-320 aa
Specificity	eIF2B Gamma Polyclonal Antibody detects endogenous levels of eIF2B Gamma protein.
Immunogen Sequence	



Western blot analysis of K562 cells using eIF2B Gamma Polyclonal Antibody diluted at 1/4 1000



Western blot analysis of various cells using eIF2B Gamma Polyclonal Antibody diluted at 1/4 1000

This product is suitable for in-vitro studies under the RESEARCH USE ONLY [RUO] licence. This product must not be used as for diagnostic or other medical purposes.
St John's Laboratory Ltd, Knowledge Dock Business Centre, University Way, London, E16 2RD | Tel: 0208 223 3081