

Anti-EGFR antibody (661-710 aa) (STJ92850)

STJ92850

GENERAL INFORMATION

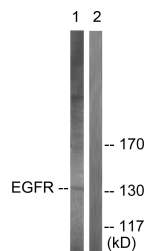
Product Type	Primary antibodies
Short Description	Rabbit polyclonal antibody anti-Epidermal growth factor receptor (661-710 aa) is suitable for use in Western Blot, Immunohistochemistry, Immunofluorescence and ELISA research applications.
Applications	WB/IHC/IF/ELISA
Host/Source	Rabbit
Reactivity	Human/Mouse/Rat

PRODUCT PROPERTIES

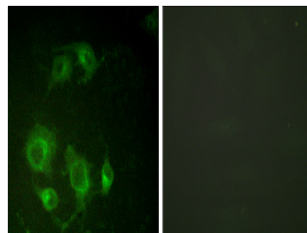
Clonality	Polyclonal
Clone ID	
Concentration	1 mg/mL
Conjugation	Unconjugated
Purification	The antibody was affinity-purified from rabbit antiserum by affinity-chromatography using epitope-specific immunogen.
Dilution Range	WB 1:500-1:2000 IHC 1:100-1:300 IF 1:200-1:1000 ELISA 1:40000
Formulation	Liquid in PBS containing 50% Glycerol, 0.5% BSA and 0.02% Sodium Azide.
Isotype	IgG
Storage	Store at -20°C for up to 1 year from the date of receipt, and avoid repeat freeze-thaw cycles.
Instruction	

TARGET INFORMATION

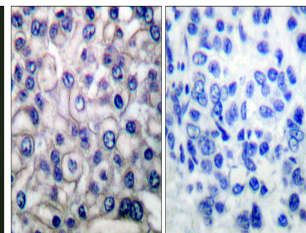
Gene ID	1956
Gene Symbol	EGFR
Uniprot ID	EGFR_HUMAN
Immunogen	The antiserum was produced against synthesized peptide derived from the human EGFR at the amino acid range 661-710
Immunogen Region	661-710 aa
Specificity	EGFR Polyclonal Antibody detects endogenous levels of EGFR protein.
Immunogen Sequence	



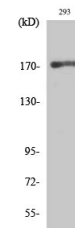
Western blot analysis of lysates from A431 cells, using EGFR Antibody. The lane on the right is blocked with the synthesized peptide.



Immunofluorescence analysis of HUVEC cells, using EGFR Antibody. The picture on the right is blocked with the synthesized peptide.



Immunohistochemistry analysis of paraffin-embedded human breast carcinoma tissue, using EGFR Antibody. The picture on the right is blocked with the synthesized peptide.



Western blot analysis of various cells using EGFR Polyclonal Antibody diluted at 1:1000