

Anti-EEF2 antibody (31-80 aa) (STJ92841)

STJ92841

GENERAL INFORMATION

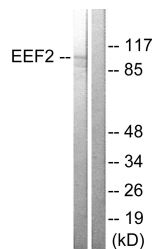
Product Type	Primary antibodies
Short Description	Rabbit polyclonal antibody anti-Elongation factor 2 (31-80 aa) is suitable for use in Western Blot, Immunohistochemistry, Immunofluorescence and ELISA research applications.
Applications	WB/IHC/IF/ELISA
Host/Source	Rabbit
Reactivity	Human/Mouse/Rat

PRODUCT PROPERTIES

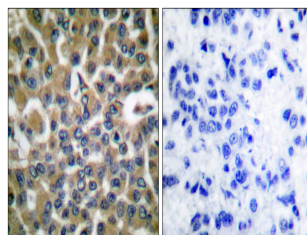
Clonality	Polyclonal
Clone ID	
Concentration	1 mg/mL
Conjugation	Unconjugated
Purification	The antibody was affinity-purified from rabbit antiserum by affinity-chromatography using epitope-specific immunogen.
Dilution Range	WB 1:500-1:2000 IHC 1:100-1:300 IF 1:200-1:1000 ELISA 1:5000
Formulation	Liquid in PBS containing 50% Glycerol, 0.5% BSA and 0.02% Sodium Azide.
Isotype	IgG
Storage	Store at -20°C for up to 1 year from the date of receipt, and avoid repeat freeze-thaw cycles.
Instruction	

TARGET INFORMATION

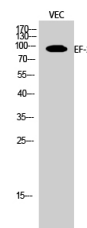
Gene ID	1938
Gene Symbol	EEF2
Uniprot ID	EEF2_HUMAN
Immunogen	The antiserum was produced against synthesized peptide derived from the human eEF2 at the amino acid range 31-80
Immunogen Region	31-80 aa
Specificity	EF-2 Polyclonal Antibody detects endogenous levels of EF-2 protein.
Immunogen Sequence	



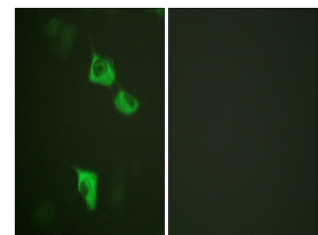
Western blot analysis of lysates from NIH/3T3 cells, treated with serum 10% 30', using eEF2 Antibody. The lane on the right is blocked with the synthesized peptide.



Immunohistochemistry analysis of paraffin-embedded human breast carcinoma tissue, using eEF2 Antibody. The picture on the right is blocked with the synthesized peptide.



Western blot analysis of VEC cells using EF-2 Polyclonal Antibody diluted at 1:1% 2000



Immunofluorescence analysis of HUVEC cells, using eEF2 Antibody. The picture on the right is blocked with the synthesized peptide.