

Anti-S1PR4 antibody (211-260 aa) (STJ92833)

STJ92833

GENERAL INFORMATION

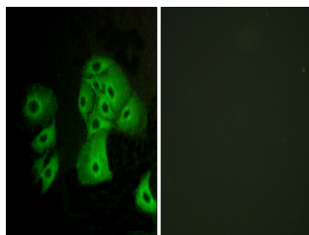
Product Type	Primary antibodies
Short Description	Rabbit polyclonal antibody anti-Sphingosine 1-phosphate receptor 4 (211-260 aa) is suitable for use in Western Blot, Immunofluorescence and ELISA research applications.
Applications	WB/IF/ELISA
Host/Source	Rabbit
Reactivity	Human/Rat/Mouse

PRODUCT PROPERTIES

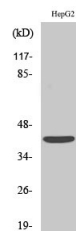
Clonality	Polyclonal
Clone ID	
Concentration	1 mg/mL
Conjugation	Unconjugated
Purification	The antibody was affinity-purified from rabbit antiserum by affinity-chromatography using epitope-specific immunogen.
Dilution Range	WB 1:500-1:2000 IF 1:200-1:1000 ELISA 1:5000
Formulation	Liquid in PBS containing 50% Glycerol, 0.5% BSA and 0.02% Sodium Azide.
Isotype	IgG
Storage Instruction	Store at -20°C for up to 1 year from the date of receipt, and avoid repeat freeze-thaw cycles.

TARGET INFORMATION

Gene ID	8698
Gene Symbol	S1PR4
Uniprot ID	S1PR4_HUMAN
Immunogen	The antiserum was produced against synthesized peptide derived from the human EDG6 at the amino acid range 211-260
Immunogen Region	211-260 aa
Specificity	EDG-6 Polyclonal Antibody detects endogenous levels of EDG-6 protein.
Immunogen Sequence	



Immunofluorescence analysis of A549 cells, using EDG6 Antibody. The picture on the right is blocked with the synthesized peptide.



Western blot analysis of various cells using EDG-6 Polyclonal Antibody

This product is suitable for in-vitro studies under the RESEARCH USE ONLY [RUO] licence. This product must not be used as for diagnostic or other medical purposes.
St John's Laboratory Ltd, Knowledge Dock Business Centre, University Way, London, E16 2RD | Tel: 0208 223 3081