

Anti-SLC1A3 antibody (492-541 aa) (STJ92813)

STJ92813

GENERAL INFORMATION

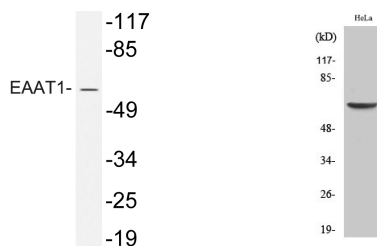
Product Type	Primary antibodies
Short Description	Rabbit polyclonal antibody anti-Excitatory amino acid transporter 1 (492-541 aa) is suitable for use in Western Blot and ELISA research applications.
Applications	WB/ELISA
Host/Source	Rabbit
Reactivity	Human/Rat/Mouse

PRODUCT PROPERTIES

Clonality	Polyclonal
Clone ID	
Concentration	1 mg/mL
Conjugation	Unconjugated
Purification	The antibody was affinity-purified from rabbit antiserum by affinity-chromatography using epitope-specific immunogen.
Dilution Range	WB 1:500-1:2000 ELISA 1:10000
Formulation	Liquid in PBS containing 50% Glycerol, 0.5% BSA and 0.02% Sodium Azide.
Isotype	IgG
Storage	Store at -20°C for up to 1 year from the date of receipt, and avoid repeat freeze-thaw cycles.
Instruction	

TARGET INFORMATION

Gene ID	6507
Gene Symbol	SLC1A3
Uniprot ID	EAA1_HUMAN
Immunogen	The antiserum was produced against synthesized peptide derived from the human Ethe amino acidT1 at the amino acid range 492-541
Immunogen Region	492-541 aa
Specificity	EAAT1 Polyclonal Antibody detects endogenous levels of EAAT1 protein.
Immunogen Sequence	



Western blot analysis of lysate from HeLa cells, using EAAT1 antibody.

Western blot analysis of various cells using EAAT1 Polyclonal Antibody

This product is suitable for in-vitro studies under the RESEARCH USE ONLY [RUO] licence. This product must not be used as for diagnostic or other medical purposes.
St John's Laboratory Ltd, Knowledge Dock Business Centre, University Way, London, E16 2RD | Tel: 0208 223 3081