

Anti-DYNLRB2 antibody (21-70 aa) (STJ92798)

STJ92798

GENERAL INFORMATION

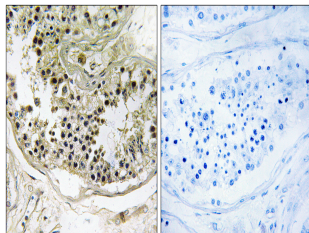
Product Type	Primary antibodies
Short Description	Rabbit polyclonal antibody anti-Dynein light chain roadblock-type 2 (21-70 aa) is suitable for use in Immunohistochemistry, Immunofluorescence and ELISA research applications.
Applications	IHC/IF/ELISA
Host/Source	Rabbit
Reactivity	Human/Mouse

PRODUCT PROPERTIES

Clonality	Polyclonal
Clone ID	
Concentration	1 mg/mL
Conjugation	Unconjugated
Purification	The antibody was affinity-purified from rabbit antiserum by affinity-chromatography using epitope-specific immunogen.
Dilution Range	IHC 1:100-1:300 ELISA 1:10000 IF 1:50-200
Formulation	Liquid in PBS containing 50% Glycerol, 0.5% BSA and 0.02% Sodium Azide.
Isotype	IgG
Storage Instruction	Store at -20°C for up to 1 year from the date of receipt, and avoid repeat freeze-thaw cycles.

TARGET INFORMATION

Gene ID	83657
Gene Symbol	DYNLRB2
Uniprot ID	DLRB2_HUMAN
Immunogen	The antiserum was produced against synthesized peptide derived from the human DYNLRB2 at the amino acid range 21-70
Immunogen Region	21-70 aa
Specificity	Dynein LC 2B Polyclonal Antibody detects endogenous levels of Dynein LC 2B protein.
Immunogen Sequence	



Immunohistochemistry analysis of paraffin-embedded human testis tissue, using DYNLRB2 Antibody. The picture on the right is blocked with the synthesized peptide.