

Anti-DOK4 antibody (11-60 aa) (STJ92763)

STJ92763

GENERAL INFORMATION

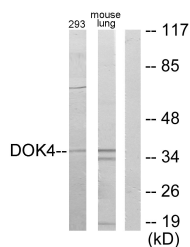
Product Type	Primary antibodies
Short Description	Rabbit polyclonal antibody anti-Docking protein 4 (11-60 aa) is suitable for use in Western Blot, Immunohistochemistry, Immunofluorescence and ELISA research applications.
Applications	WB/IHC/IF/ELISA
Host/Source	Rabbit
Reactivity	Human/Mouse

PRODUCT PROPERTIES

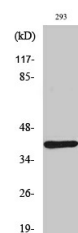
Clonality	Polyclonal
Clone ID	
Concentration	1 mg/mL
Conjugation	Unconjugated
Purification	The antibody was affinity-purified from rabbit antiserum by affinity-chromatography using epitope-specific immunogen.
Dilution Range	WB 1:500-1:2000 IHC 1:100-1:300 IF 1:200-1:1000 ELISA 1:20000
Formulation	Liquid in PBS containing 50% Glycerol, 0.5% BSA and 0.02% Sodium Azide.
Isotype	IgG
Storage Instruction	Store at -20°C for up to 1 year from the date of receipt, and avoid repeat freeze-thaw cycles.

TARGET INFORMATION

Gene ID	55715
Gene Symbol	DOK4
Uniprot ID	DOK4_HUMAN
Immunogen	The antiserum was produced against synthesized peptide derived from the human DOK4 at the amino acid range 11-60
Immunogen Region	11-60 aa
Specificity	Dok-4 Polyclonal Antibody detects endogenous levels of Dok-4 protein.
Immunogen Sequence	



Western blot analysis of lysates from 293 and mouse lung, using DOK4 Antibody. The lane on the right is blocked with the synthesized peptide.



Western blot analysis of various cells using Dok-4 Polyclonal Antibody