

Anti-DOK3 antibody (101-150 aa) (STJ92762)

STJ92762

GENERAL INFORMATION

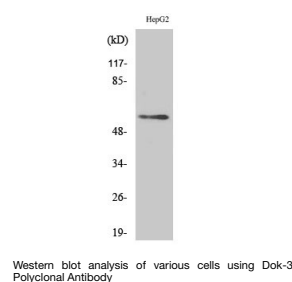
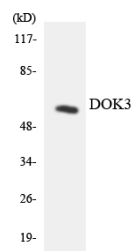
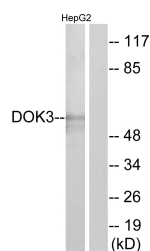
Product Type	Primary antibodies
Short Description	Rabbit polyclonal antibody anti-Docking protein 3 (101-150 aa) is suitable for use in Western Blot, Immunohistochemistry, Immunofluorescence and ELISA research applications.
Applications	WB/IHC/IF/ELISA
Host/Source	Rabbit
Reactivity	Human/Mouse

PRODUCT PROPERTIES

Clonality	Polyclonal
Clone ID	
Concentration	1 mg/mL
Conjugation	Unconjugated
Purification	The antibody was affinity-purified from rabbit antiserum by affinity-chromatography using epitope-specific immunogen.
Dilution Range	WB 1:500-1:2000 IHC 1:100-1:300 IF 1:200-1:1000 ELISA 1:20000
Formulation	Liquid in PBS containing 50% Glycerol, 0.5% BSA and 0.02% Sodium Azide.
Isotype	IgG
Storage Instruction	Store at -20°C for up to 1 year from the date of receipt, and avoid repeat freeze-thaw cycles.

TARGET INFORMATION

Gene ID	79930
Gene Symbol	DOK3
Uniprot ID	DOK3_HUMAN
Immunogen	The antiserum was produced against synthesized peptide derived from the human DOK3 at the amino acid range 101-150
Immunogen Region	101-150 aa
Specificity	Dok-3 Polyclonal Antibody detects endogenous levels of Dok-3 protein.
Immunogen Sequence	



This product is suitable for in-vitro studies under the RESEARCH USE ONLY [RUO] licence. This product must not be used as for diagnostic or other medical purposes.
St John's Laboratory Ltd, Knowledge Dock Business Centre, University Way, London, E16 2RD | Tel: 0208 223 3081