

Anti-POLD3 antibody (411-460 aa) (STJ92737)

STJ92737

GENERAL INFORMATION

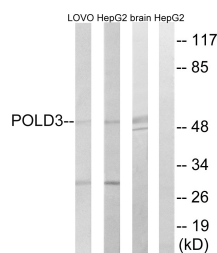
Product Type	Primary antibodies
Short Description	Rabbit polyclonal antibody anti-DNA polymerase delta subunit 3 (411-460 aa) is suitable for use in Western Blot and ELISA research applications.
Applications	WB/ELISA
Host/Source	Rabbit
Reactivity	Human/Mouse/Rat

PRODUCT PROPERTIES

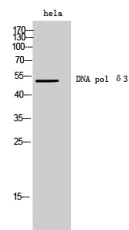
Clonality	Polyclonal
Clone ID	
Concentration	1 mg/mL
Conjugation	Unconjugated
Purification	The antibody was affinity-purified from rabbit antiserum by affinity-chromatography using epitope-specific immunogen.
Dilution Range	WB 1:500-1:2000 ELISA 1:20000
Formulation	Liquid in PBS containing 50% Glycerol, 0.5% BSA and 0.02% Sodium Azide.
Isotype	IgG
Storage Instruction	Store at -20°C for up to 1 year from the date of receipt, and avoid repeat freeze-thaw cycles.

TARGET INFORMATION

Gene ID	10714
Gene Symbol	POLD3
Uniprot ID	DPOD3_HUMAN
Immunogen	The antiserum was produced against synthesized peptide derived from the human POLD3 at the amino acid range 411-460
Immunogen	411-460 aa
Region	
Specificity	DNA pol Delta 3 Polyclonal Antibody detects endogenous levels of DNA pol Delta 3 protein.
Immunogen	
Sequence	



Western blot analysis of lysates from LOVO, HepG2, and mouse brain cells, using POLD3 Antibody. The lane on the right is blocked with the synthesized peptide.



Western blot analysis of hela cells using DNA pol Delta 3 Polyclonal Antibody diluted at 1/14500 cells nucleus extracted by Minute TM Cytoplasmic and Nuclear Fractionation kit (SC-003, Inventibiotek, MN, USA).

This product is suitable for in-vitro studies under the RESEARCH USE ONLY [RUO] licence. This product must not be used as for diagnostic or other medical purposes.
St John's Laboratory Ltd, Knowledge Dock Business Centre, University Way, London, E16 2RD | Tel: 0208 223 3081