

Anti-POLD1 antibody (1051-1100 aa) (STJ92736)

STJ92736

GENERAL INFORMATION

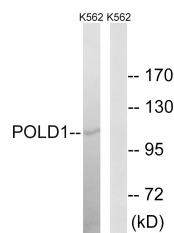
Product Type	Primary antibodies
Short Description	Rabbit polyclonal antibody anti-DNA polymerase delta catalytic subunit (1051-1100 aa) is suitable for use in Western Blot and ELISA research applications.
Applications	WB/ELISA
Host/Source	Rabbit
Reactivity	Human/Mouse/Rat

PRODUCT PROPERTIES

Clonality	Polyclonal
Clone ID	
Concentration	1 mg/mL
Conjugation	Unconjugated
Purification	The antibody was affinity-purified from rabbit antiserum by affinity-chromatography using epitope-specific immunogen.
Dilution Range	WB 1:500-1:2000 ELISA 1:40000
Formulation	Liquid in PBS containing 50% Glycerol, 0.5% BSA and 0.02% Sodium Azide.
Isotype	IgG
Storage	Store at -20°C for up to 1 year from the date of receipt, and avoid repeat freeze-thaw cycles.
Instruction	

TARGET INFORMATION

Gene ID	5424
Gene Symbol	POLD1
Uniprot ID	DPOD1_HUMAN
Immunogen	The antiserum was produced against synthesized peptide derived from the human POLD1 at the amino acid range 1051-1100
Immunogen Region	1051-1100 aa
Specificity	DNA pol Delta cat Polyclonal Antibody detects endogenous levels of DNA pol Delta cat protein.
Immunogen Sequence	



Western blot analysis of lysates from K562 cells, using POLD1 Antibody. The lane on the right is blocked with the synthesized peptide.