

Anti-POLG2 antibody (291-340 aa) (STJ92735)

STJ92735

GENERAL INFORMATION

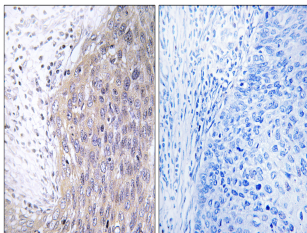
Product Type	Primary antibodies
Short Description	Rabbit polyclonal antibody anti-DNA polymerase subunit gamma-2, mitochondrial (291-340 aa) is suitable for use in Immunohistochemistry, Immunofluorescence and ELISA research applications.
Applications	IHC/IF/ELISA
Host/Source	Rabbit
Reactivity	Human/Rat/Mouse

PRODUCT PROPERTIES

Clonality	Polyclonal
Clone ID	
Concentration	1 mg/mL
Conjugation	Unconjugated
Purification	The antibody was affinity-purified from rabbit antiserum by affinity-chromatography using epitope-specific immunogen.
Dilution Range	IHC 1:100-1:300 ELISA 1:20000 IF 1:50-200
Formulation	Liquid in PBS containing 50% Glycerol, 0.5% BSA and 0.02% Sodium Azide.
Isotype	IgG
Storage Instruction	Store at -20°C for up to 1 year from the date of receipt, and avoid repeat freeze-thaw cycles.

TARGET INFORMATION

Gene ID	11232
Gene Symbol	POLG2
Uniprot ID	DPOG2_HUMAN
Immunogen	The antiserum was produced against synthesized peptide derived from the human POLG2 at the amino acid range 291-340
Immunogen Region	291-340 aa
Specificity	DNA pol Gamma 2 Polyclonal Antibody detects endogenous levels of DNA pol Gamma 2 protein.
Immunogen Sequence	



Immunohistochemistry analysis of paraffin-embedded human cervix carcinoma tissue, using POLG2 Antibody. The picture on the right is blocked with the synthesized peptide.