

Anti-DLX5 antibody (91-140 aa) (STJ92725)

STJ92725

GENERAL INFORMATION

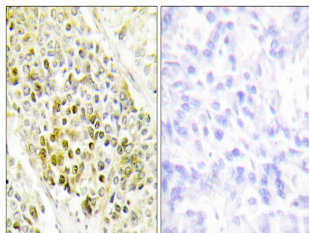
Product Type	Primary antibodies
Short Description	Rabbit polyclonal antibody anti-Homeobox protein DLX-5 (91-140 aa) is suitable for use in Western Blot, Immunohistochemistry, Immunofluorescence and ELISA research applications.
Applications	WB/IHC/IF/ELISA
Host/Source	Rabbit
Reactivity	Human/Mouse/Rat

PRODUCT PROPERTIES

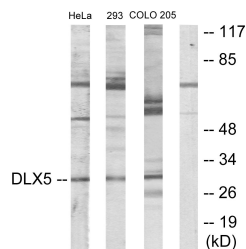
Clonality	Polyclonal
Clone ID	
Concentration	1 mg/mL
Conjugation	Unconjugated
Purification	The antibody was affinity-purified from rabbit antiserum by affinity-chromatography using epitope-specific immunogen.
Dilution Range	WB 1:500-1:2000 IHC 1:100-1:300 IF 1:200-1:1000 ELISA 1:40000
Formulation	Liquid in PBS containing 50% Glycerol, 0.5% BSA and 0.02% Sodium Azide.
Isotype	IgG
Storage Instruction	Store at -20°C for up to 1 year from the date of receipt, and avoid repeat freeze-thaw cycles.

TARGET INFORMATION

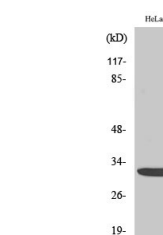
Gene ID	1749
Gene Symbol	DLX5
Uniprot ID	DLX5_HUMAN
Immunogen	The antiserum was produced against synthesized peptide derived from the human DLX5 at the amino acid range 91-140
Immunogen Region	91-140 aa
Specificity	Dlx-5 Polyclonal Antibody detects endogenous levels of Dlx-5 protein.
Immunogen Sequence	



Immunohistochemistry analysis of paraffin-embedded human lung carcinoma tissue, using DLX5 Antibody. The picture on the right is blocked with the synthesized peptide.



Western blot analysis of lysates from HeLa, 293, and COLO205 cells, using DLX5 Antibody. The lane on the right is blocked with the synthesized peptide.



Western blot analysis of various cells using Dlx-5 Polyclonal Antibody diluted at 1:500