

Anti-DLX3 antibody (71-120 aa) (STJ92723)

STJ92723

GENERAL INFORMATION

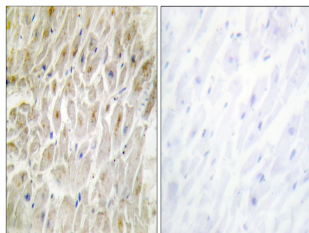
Product Type	Primary antibodies
Short Description	Rabbit polyclonal antibody anti-Homeobox protein DLX-3 (71-120 aa) is suitable for use in Western Blot, Immunohistochemistry, Immunofluorescence and ELISA research applications.
Applications	WB/IHC/IF/ELISA
Host/Source	Rabbit
Reactivity	Human/Mouse

PRODUCT PROPERTIES

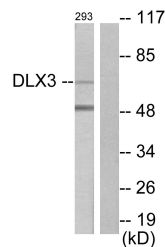
Clonality	Polyclonal
Clone ID	
Concentration	1 mg/mL
Conjugation	Unconjugated
Purification	The antibody was affinity-purified from rabbit antiserum by affinity-chromatography using epitope-specific immunogen.
Dilution Range	WB 1:500-1:2000 IHC 1:100-1:300 ELISA 1:40000 IF 1:50-200
Formulation	Liquid in PBS containing 50% Glycerol, 0.5% BSA and 0.02% Sodium Azide.
Isotype	IgG
Storage Instruction	Store at -20°C for up to 1 year from the date of receipt, and avoid repeat freeze-thaw cycles.

TARGET INFORMATION

Gene ID	1747
Gene Symbol	DLX3
Uniprot ID	DLX3_HUMAN
Immunogen	The antiserum was produced against synthesized peptide derived from the human DLX3 at the amino acid range 71-120
Immunogen Region	71-120 aa
Specificity	Dlx-3 Polyclonal Antibody detects endogenous levels of Dlx-3 protein.
Immunogen Sequence	



Immunohistochemistry analysis of paraffin-embedded human heart tissue, using DLX3 Antibody. The picture on the right is blocked with the synthesized peptide.



Western blot analysis of lysates from 293 cells, using DLX3 Antibody. The lane on the right is blocked with the synthesized peptide.



Western blot analysis of various cells using Dlx-3 Polyclonal Antibody cells nucleus extracted by Minute™ Cytoplasmic and Nuclear Fractionation kit (SC-003, InventiBiotec, MN, USA).