

## Anti-ZDHHC15 antibody (288-337 aa) (STJ92707)

STJ92707

### GENERAL INFORMATION

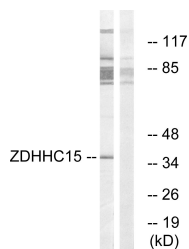
<b>Product Type</b>	Primary antibodies
<b>Short Description</b>	Rabbit polyclonal antibody anti-Palmitoyltransferase ZDHHC15 (288-337 aa) is suitable for use in Western Blot and ELISA research applications.
<b>Applications</b>	WB/ELISA
<b>Host/Source</b>	Rabbit
<b>Reactivity</b>	Human/Rat/Mouse

### PRODUCT PROPERTIES

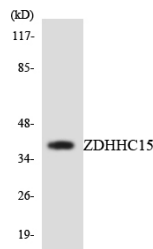
<b>Clonality</b>	Polyclonal
<b>Clone ID</b>	
<b>Concentration</b>	1 mg/mL
<b>Conjugation</b>	Unconjugated
<b>Purification</b>	The antibody was affinity-purified from rabbit antiserum by affinity-chromatography using epitope-specific immunogen.
<b>Dilution Range</b>	WB 1:500-1:2000 ELISA 1:10000
<b>Formulation</b>	Liquid in PBS containing 50% Glycerol, 0.5% BSA and 0.02% Sodium Azide.
<b>Isotype</b>	IgG
<b>Storage Instruction</b>	Store at -20°C for up to 1 year from the date of receipt, and avoid repeat freeze-thaw cycles.

### TARGET INFORMATION

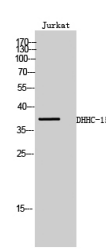
<b>Gene ID</b>	158866
<b>Gene Symbol</b>	ZDHHC15
<b>Uniprot ID</b>	ZDH15_HUMAN
<b>Immunogen</b>	The antiserum was produced against synthesized peptide derived from the human ZDHHC15 at the amino acid range 288-337
<b>Immunogen</b>	288-337 aa
<b>Region</b>	
<b>Specificity</b>	DHHC-15 Polyclonal Antibody detects endogenous levels of DHHC-15 protein.
<b>Immunogen</b>	
<b>Sequence</b>	



Western blot analysis of lysates from Jurkat cells, using ZDHHC15 Antibody. The lane on the right is blocked with the synthesized peptide.



Western blot analysis of the lysates from 293 cells using ZDHHC15 antibody.



Western blot analysis of Jurkat cells using DHHC-15 Polyclonal Antibody

This product is suitable for in-vitro studies under the RESEARCH USE ONLY [RUO] licence. This product must not be used as for diagnostic or other medical purposes.  
St John's Laboratory Ltd, Knowledge Dock Business Centre, University Way, London, E16 2RD | Tel: 0208 223 3081