

Anti-DGKK antibody (1221-1270 aa) (STJ92704)

STJ92704

GENERAL INFORMATION

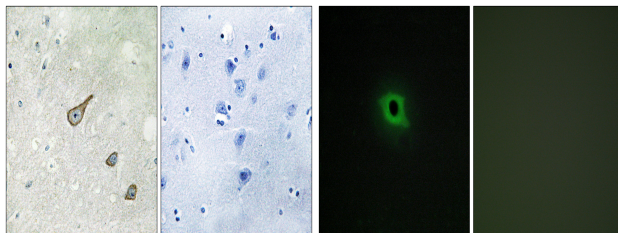
Product Type	Primary antibodies
Short Description	Rabbit polyclonal antibody anti-Diacylglycerol kinase kappa (1221-1270 aa) is suitable for use in Immunohistochemistry, Immunofluorescence, Western Blot and ELISA research applications.
Applications	IHC/IF/WB/ELISA
Host/Source	Rabbit
Reactivity	Human/Rat/Mouse

PRODUCT PROPERTIES

Clonality	Polyclonal
Clone ID	
Concentration	1 mg/mL
Conjugation	Unconjugated
Purification	The antibody was affinity-purified from rabbit antiserum by affinity-chromatography using epitope-specific immunogen.
Dilution Range	WB 1:500-2000 IHC 1:100-1:300 IF 1:200-1:1000 ELISA 1:20000
Formulation	Liquid in PBS containing 50% Glycerol, 0.5% BSA and 0.02% Sodium Azide.
Isotype	IgG
Storage Instruction	Store at -20°C for up to 1 year from the date of receipt, and avoid repeat freeze-thaw cycles.

TARGET INFORMATION

Gene ID	139189
Gene Symbol	DGKK
Uniprot ID	DGKK_HUMAN
Immunogen	The antiserum was produced against synthesized peptide derived from the human DGKK at the amino acid range 1221-1270
Immunogen	1221-1270 aa
Region	
Specificity	DGK-Kappa Polyclonal Antibody detects endogenous levels of DGK-Kappa protein.
Immunogen Sequence	



Immunohistochemistry analysis of paraffin-embedded human brain tissue, using DGKK Antibody. The picture on the right is blocked with the synthesized peptide.

Immunofluorescence analysis of COS7 cells, using DGKK Antibody. The picture on the right is blocked with the synthesized peptide.