

Anti-DGKI antibody (991-1040 aa) (STJ92703)

STJ92703

GENERAL INFORMATION

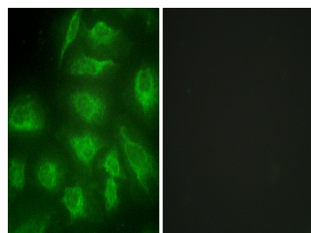
Product Type	Primary antibodies
Short Description	Rabbit polyclonal antibody anti-Diacylglycerol kinase iota (991-1040 aa) is suitable for use in Western Blot, Immunohistochemistry, Immunofluorescence and ELISA research applications.
Applications	WB/IHC/IF/ELISA
Host/Source	Rabbit
Reactivity	Human/Rat

PRODUCT PROPERTIES

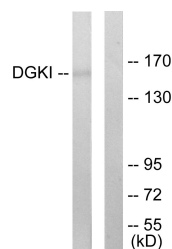
Clonality	Polyclonal
Clone ID	
Concentration	1 mg/mL
Conjugation	Unconjugated
Purification	The antibody was affinity-purified from rabbit antiserum by affinity-chromatography using epitope-specific immunogen.
Dilution Range	WB 1:500-1:2000 IHC 1:100-1:300 IF 1:200-1:1000 ELISA 1:20000
Formulation	Liquid in PBS containing 50% Glycerol, 0.5% BSA and 0.02% Sodium Azide.
Isotype	IgG
Storage Instruction	Store at -20°C for up to 1 year from the date of receipt, and avoid repeat freeze-thaw cycles.

TARGET INFORMATION

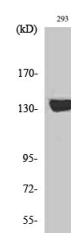
Gene ID	9162
Gene Symbol	DGKI
Uniprot ID	DGKI_HUMAN
Immunogen	The antiserum was produced against synthesized peptide derived from the human DGKI at the amino acid range 991-1040
Immunogen Region	991-1040 aa
Specificity	DGK-lota Polyclonal Antibody detects endogenous levels of DGK-lota protein.
Immunogen Sequence	



Immunofluorescence analysis of HeLa cells, using DGKI Antibody. The picture on the right is blocked with the synthesized peptide.



Western blot analysis of lysates from 293 cells, using DGKI Antibody. The lane on the right is blocked with the synthesized peptide.



Western blot analysis of various cells using DGK-lota Polyclonal Antibody diluted at 1/4 1000

This product is suitable for in-vitro studies under the RESEARCH USE ONLY [RUO] licence. This product must not be used as for diagnostic or other medical purposes.
St John's Laboratory Ltd, Knowledge Dock Business Centre, University Way, London, E16 2RD | Tel: 0208 223 3081