

Anti-DGKE antibody (161-210 aa) (STJ92699)

STJ92699

GENERAL INFORMATION

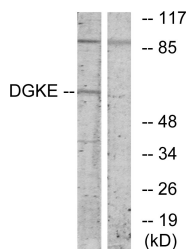
Product Type	Primary antibodies
Short Description	Rabbit polyclonal antibody anti-Diacylglycerol kinase epsilon (161-210 aa) is suitable for use in Western Blot, Immunohistochemistry, Immunofluorescence and ELISA research applications.
Applications	WB/IHC/IF/ELISA
Host/Source	Rabbit
Reactivity	Human/Mouse/Rat

PRODUCT PROPERTIES

Clonality	Polyclonal
Clone ID	
Concentration	1 mg/mL
Conjugation	Unconjugated
Purification	The antibody was affinity-purified from rabbit antiserum by affinity-chromatography using epitope-specific immunogen.
Dilution Range	WB 1:500-1:2000 IHC 1:100-1:300 ELISA 1:5000 IF 1:50-200
Formulation	Liquid in PBS containing 50% Glycerol, 0.5% BSA and 0.02% Sodium Azide.
Isotype	IgG
Storage Instruction	Store at -20°C for up to 1 year from the date of receipt, and avoid repeat freeze-thaw cycles.

TARGET INFORMATION

Gene ID	8526
Gene Symbol	DGKE
Uniprot ID	DGKE_HUMAN
Immunogen	The antiserum was produced against synthesized peptide derived from the human DGKE at the amino acid range 161-210
Immunogen Region	161-210 aa
Specificity	DGK-Epsilon Polyclonal Antibody detects endogenous levels of DGK-Epsilon protein.
Immunogen Sequence	



Western blot analysis of lysates from K562 cells, using DGKE Antibody. The lane on the right is blocked with the synthesized peptide.