

## Anti-DES antibody (421-470 aa) (STJ92691)

STJ92691

### GENERAL INFORMATION

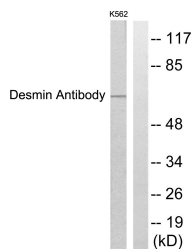
<b>Product Type</b>	Primary antibodies
<b>Short Description</b>	Rabbit polyclonal antibody anti-Desmin (421-470 aa) is suitable for use in Western Blot, Immunohistochemistry, Immunofluorescence and ELISA research applications.
<b>Applications</b>	WB/IHC/IF/ELISA
<b>Host/Source</b>	Rabbit
<b>Reactivity</b>	Human/Mouse/Rat

### PRODUCT PROPERTIES

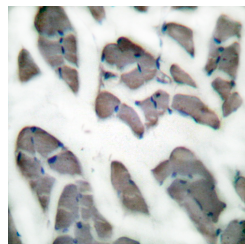
<b>Clonality</b>	Polyclonal
<b>Clone ID</b>	
<b>Concentration</b>	1 mg/mL
<b>Conjugation</b>	Unconjugated
<b>Purification</b>	The antibody was affinity-purified from rabbit antiserum by affinity-chromatography using epitope-specific immunogen.
<b>Dilution Range</b>	WB 1:500-1:2000 IHC 1:100-1:300 IF 1:200-1:1000 ELISA 1:10000
<b>Formulation</b>	Liquid in PBS containing 50% Glycerol, 0.5% BSA and 0.02% Sodium Azide.
<b>Isotype</b>	IgG
<b>Storage Instruction</b>	Store at -20°C for up to 1 year from the date of receipt, and avoid repeat freeze-thaw cycles.

### TARGET INFORMATION

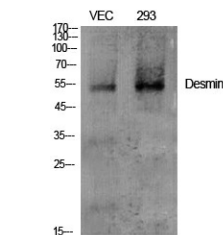
<b>Gene ID</b>	1674
<b>Gene Symbol</b>	DES
<b>Uniprot ID</b>	DESM_HUMAN
<b>Immunogen</b>	The antiserum was produced against synthesized peptide derived from the human Desmin at the amino acid range 421-470
<b>Immunogen Region</b>	421-470 aa
<b>Specificity</b>	Desmin Polyclonal Antibody detects endogenous levels of Desmin protein.
<b>Immunogen Sequence</b>	



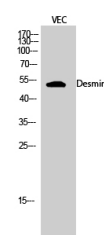
Western blot analysis of lysates from K562 cells, using Desmin Antibody. The lane on the right is blocked with the synthesized peptide.



Immunohistochemistry analysis of paraffin-embedded human skeletal muscle tissue, using Desmin Antibody. The picture on the right is blocked with the synthesized peptide.



Western blot analysis of various cells using Desmin Polyclonal Antibody diluted at 1:2000



Western blot analysis of VEC cells using Desmin Polyclonal Antibody diluted at 1:2000